

# Classification of facial peri-implant soft tissue dehiscence/deficiencies at single implant sites (esthetic zone)

By

Assisst. Prof. Dr. Hayder Raad Abdulbaqi

Department of Periodontics

College of Dentistry / University of Baghdad

*Four classes based on:*

- Position of the gingival margin of the implant-supported crown in relation to the homologous natural tooth.
- Bucco-lingual position of the implant head
- Each class was further subdivided based on the height of the anatomical papillae.

# synonyms

- mid-facial recession,
- mucosal recession or dehiscence,
- soft-tissue dehiscence/deficiency
- or a soft tissue defect

## *Statistics*

- 57% incidence of  $\geq 1$  mm (on the facial or lingual sites) mostly within 1<sup>st</sup> 3 months
- Immediately placed implants are at higher risk (9% to 41%)

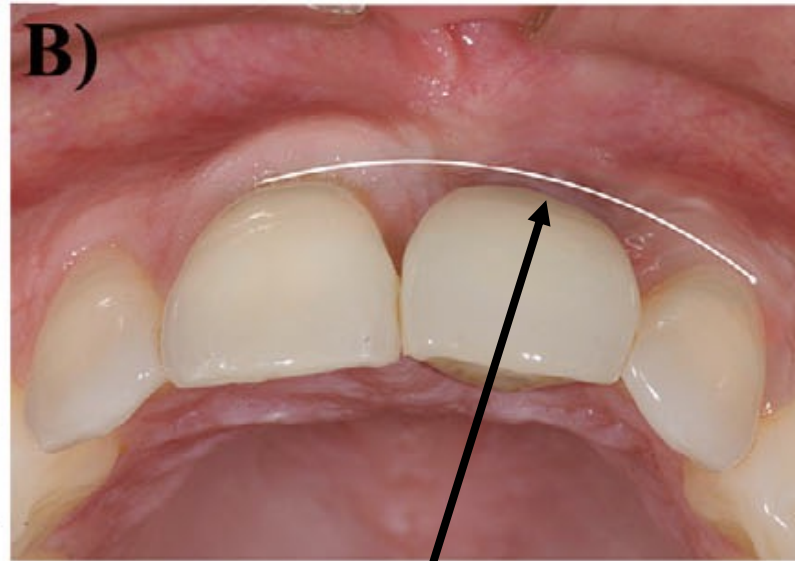
# Predisposing and precipitating factors

- a buccally positioned implant,
- an osseous dehiscence or fenestration at the buccal bone,
- a thin gingival biotype,
- a lack of or a minimal keratinized mucosa,
- vigorous tooth brushing,
- inflammation,
- an over contoured prosthesis

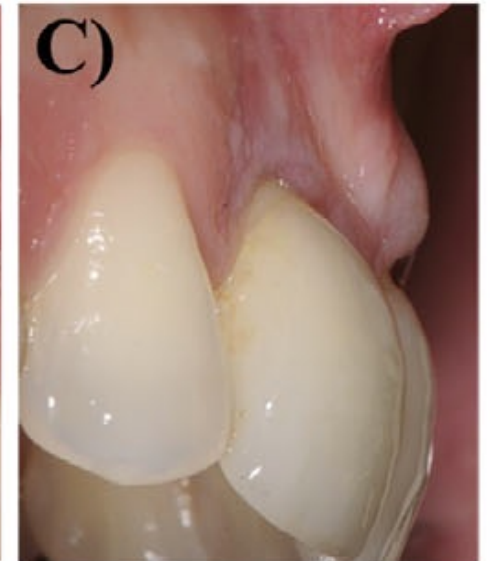
# Class I



Same level



Inside imaginary curve  
(more palataly)

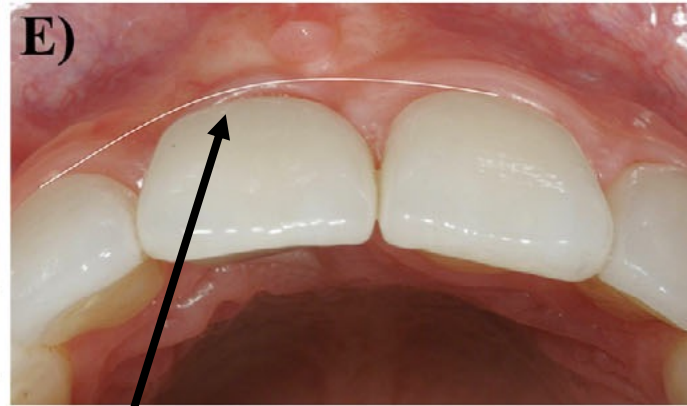


- color of the abutment/implant is visible (A)
- lack of keratinized tissue thickness (B & C)

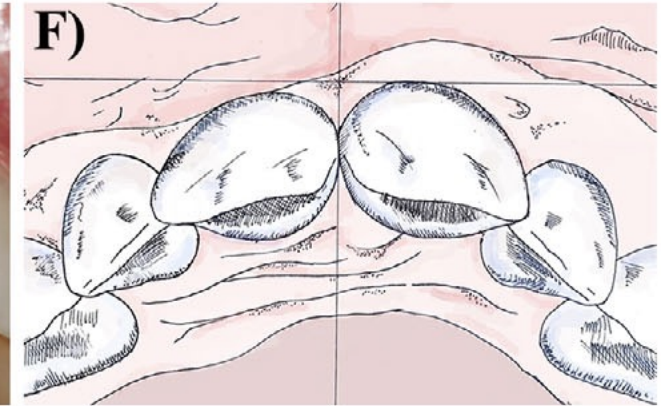
# Class II



More apical level



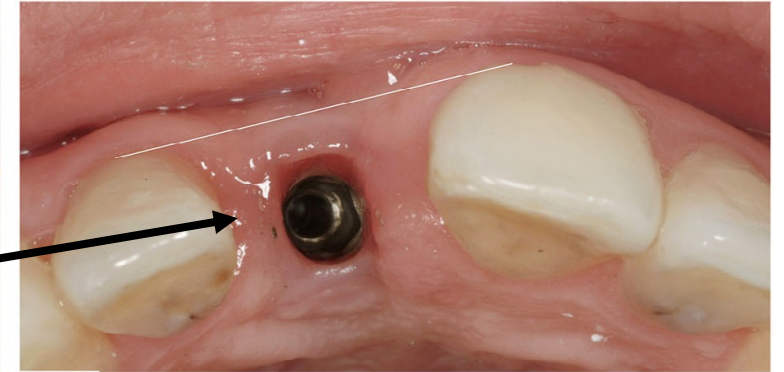
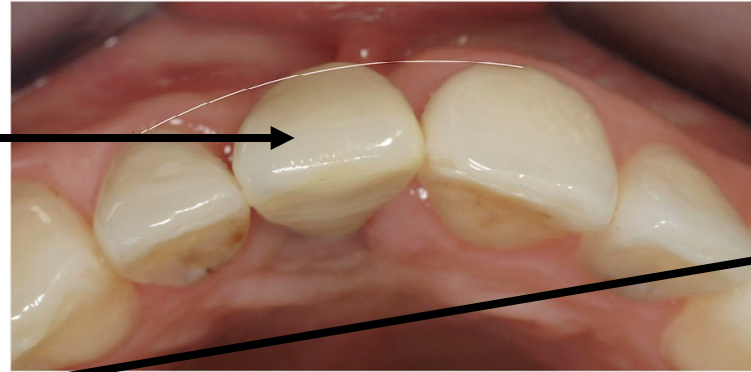
Inside imaginary curve  
(more palataly)



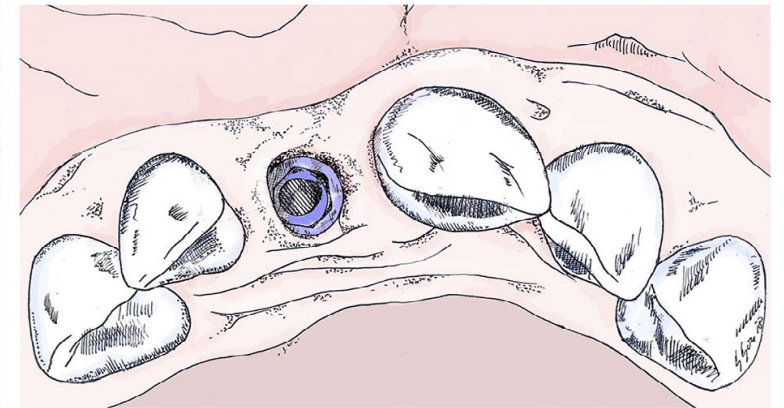
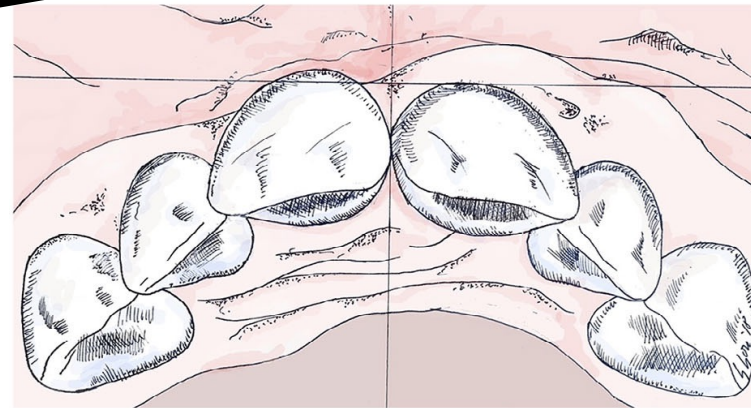
# Class III



Same Class II **but**  
Facial to imaginary line



On removal crown  
It is **palatal or inside**

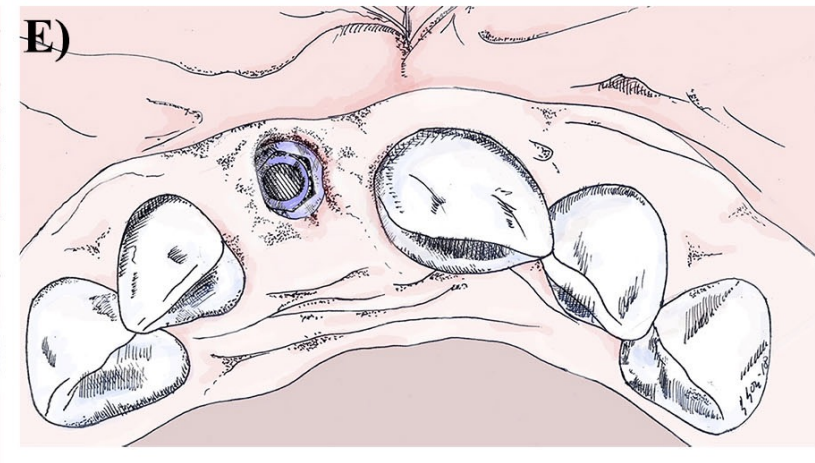
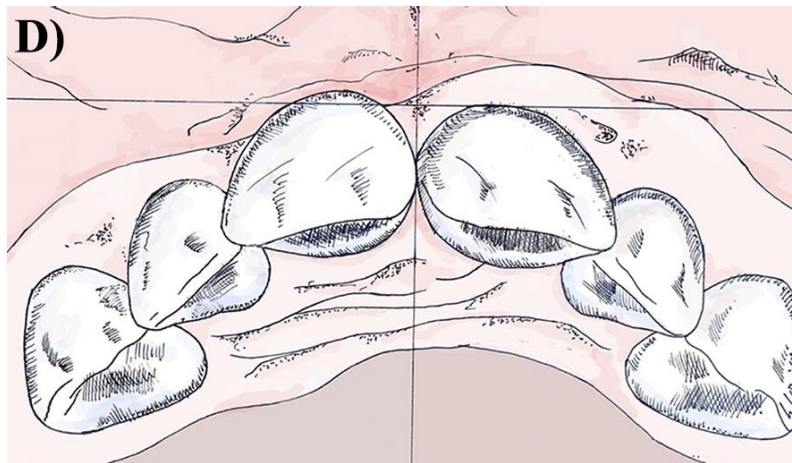
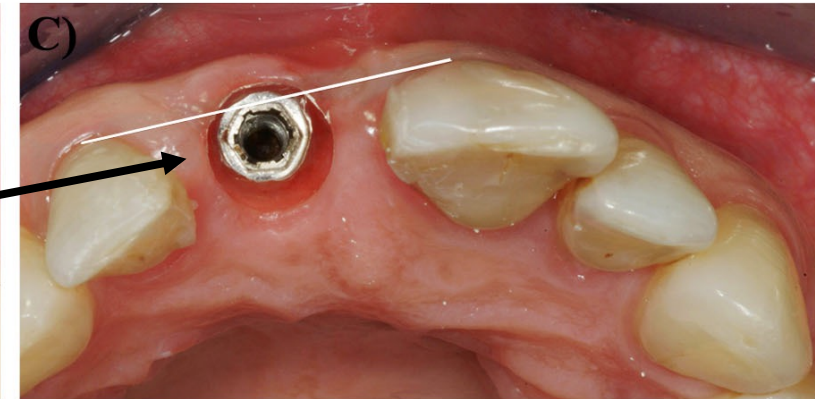
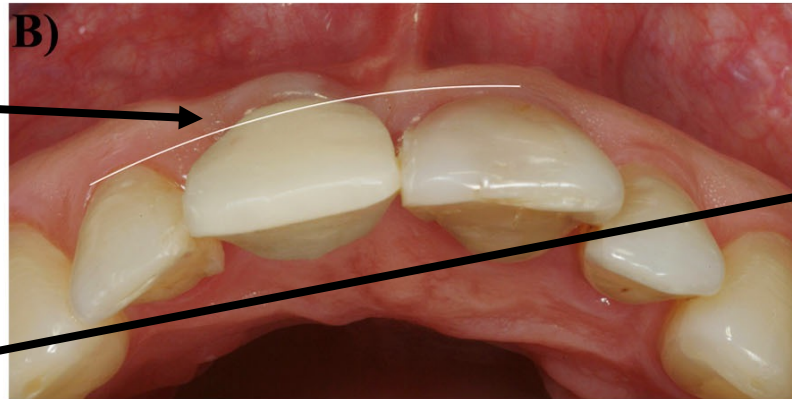




# Class IV

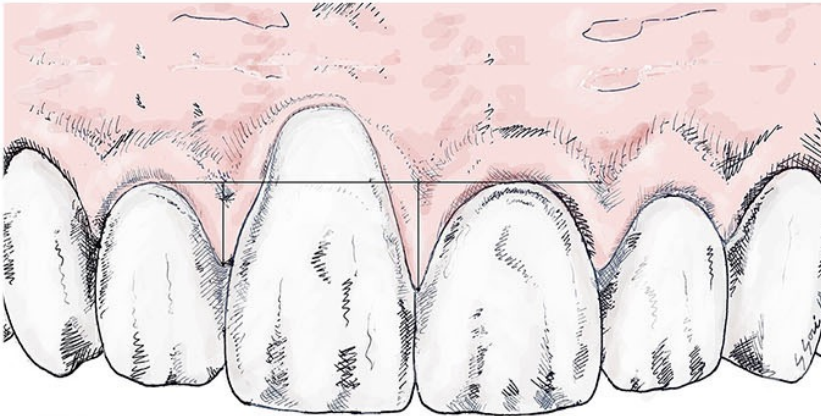
Same Class II **but**  
Facial to imaginary line

On removal crown  
It is **facial**



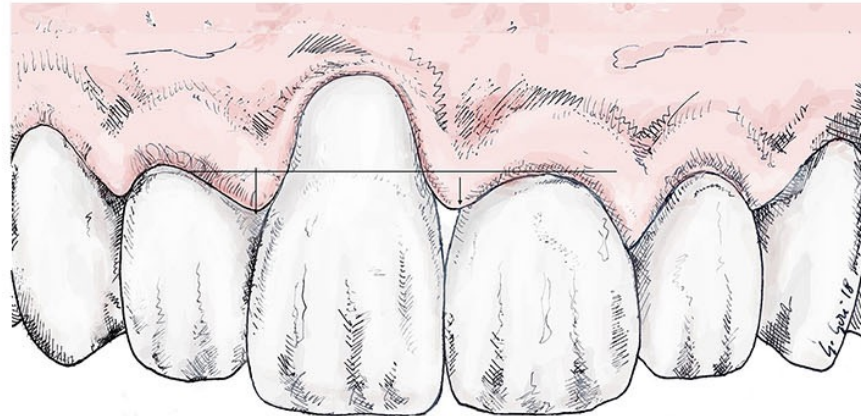


# Subclasses



**Subclass a**

Papilla is  $\geq 3$  mm coronal



**Subclass b**

One (or both Papilla) is  $< 3$  mm coronal



**Subclass c**

One (or both Papilla) is at or apical

Thanks