

Clinical considerations of anterior composite restorations

Assist. Prof. Rasha H. Jehad
B.D.S, M.Sc.
Baghdad College of Dentistry
2023

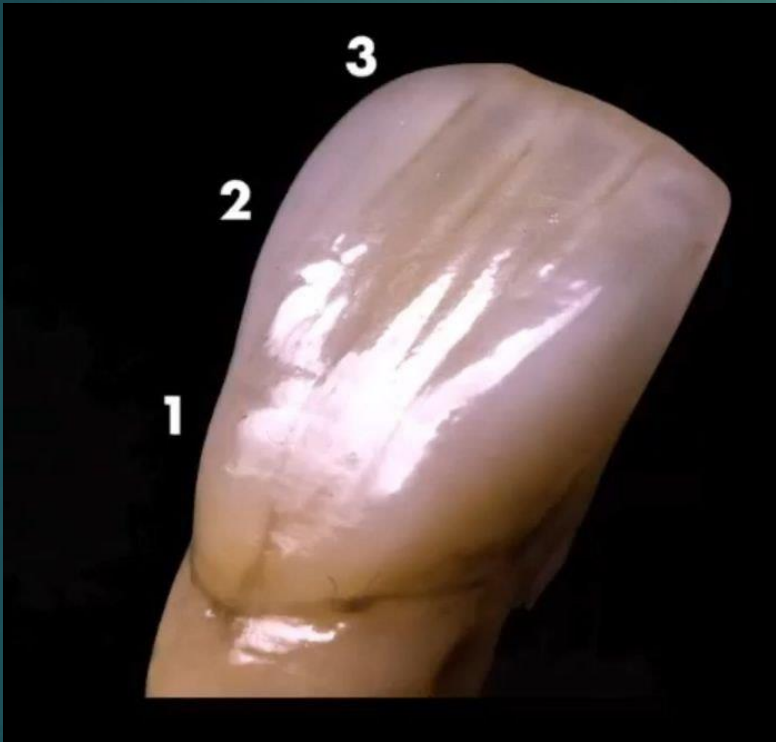


- Morphology
- Shade
- Opacity and transparency
- Marginal integrity

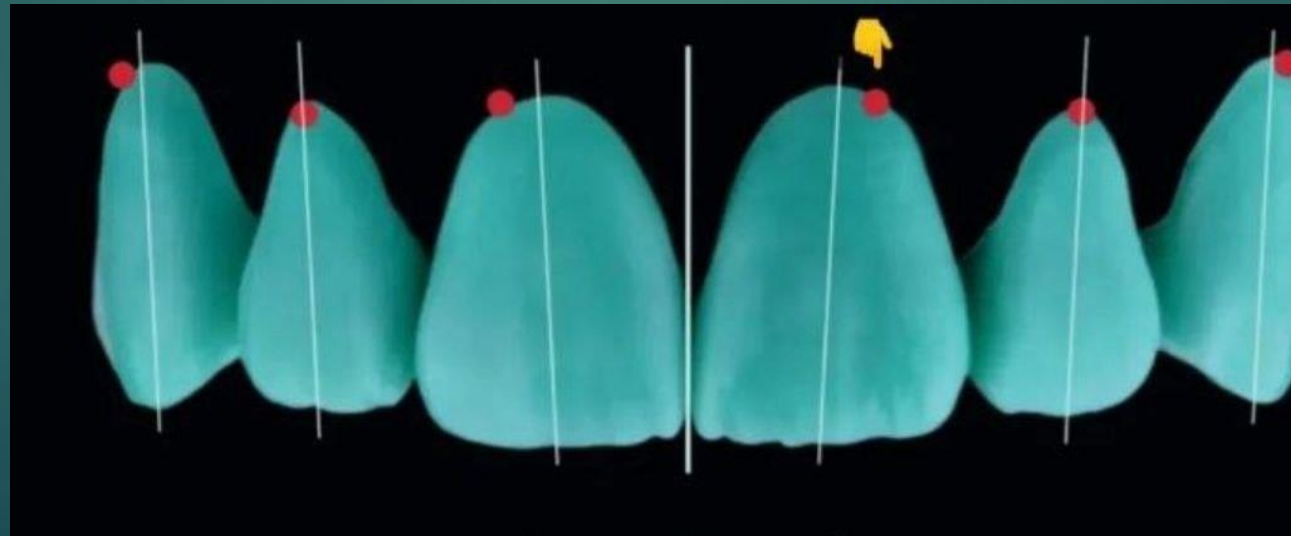


Morphology

1. General contouring



2. Zenith



3. Axis



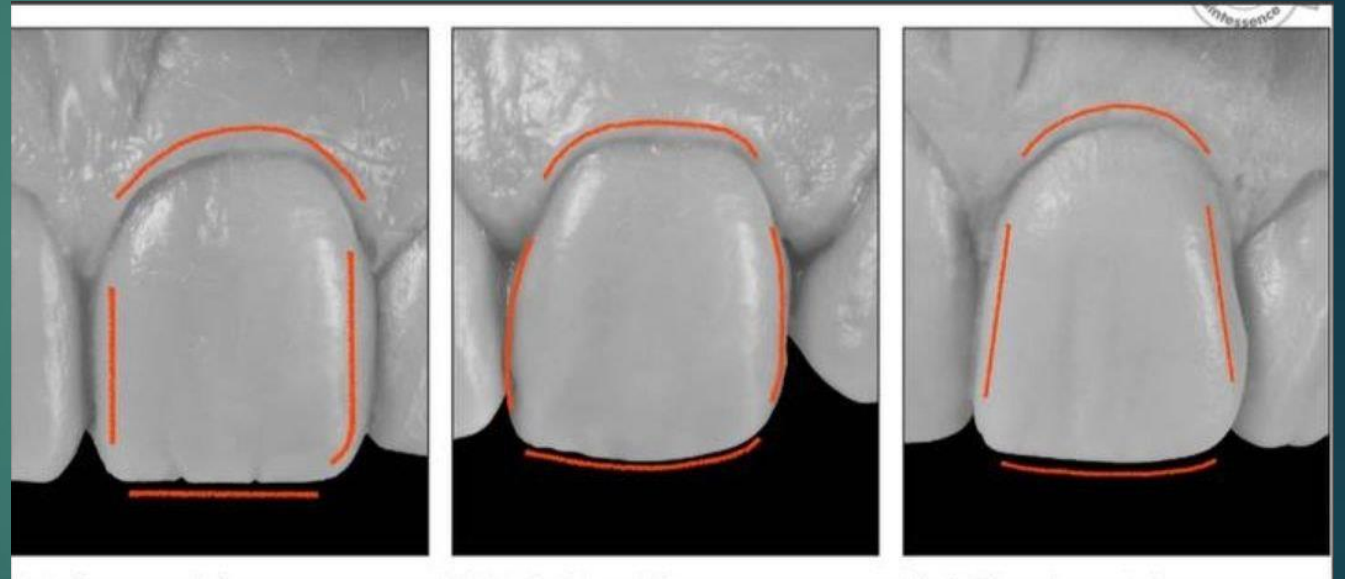
4. Contact point or area



5. Incisal embrasures



6. Transition lines



7. Macro and Micro geographies

Most anterior teeth have :
three main elevations
two main depressions.

- The mesial depression is generally **longer, deeper, and narrower** than the distal depression
- the distal depression ,**shorter, wider** and **more curved**.

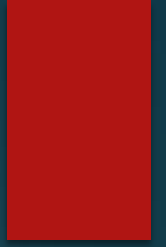


Perikymata refers to several lines that cross the enamel surface from mesial to distal, and they parallel each other and break light reflection.

Imbrication lines refer to deeper and much fewer lines in the cervical third.



Shade



hue



chroma



value



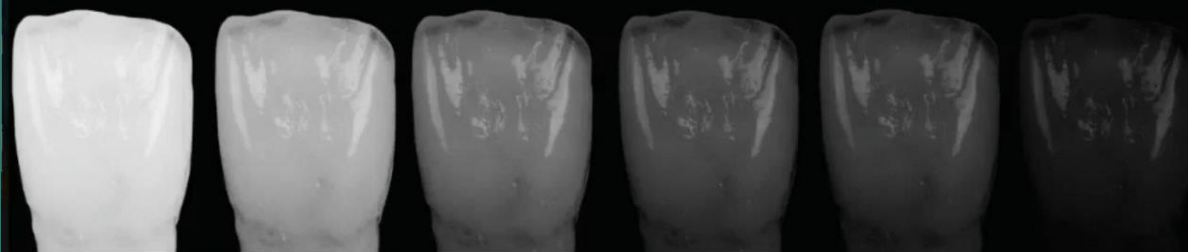
COLOR *Hue*



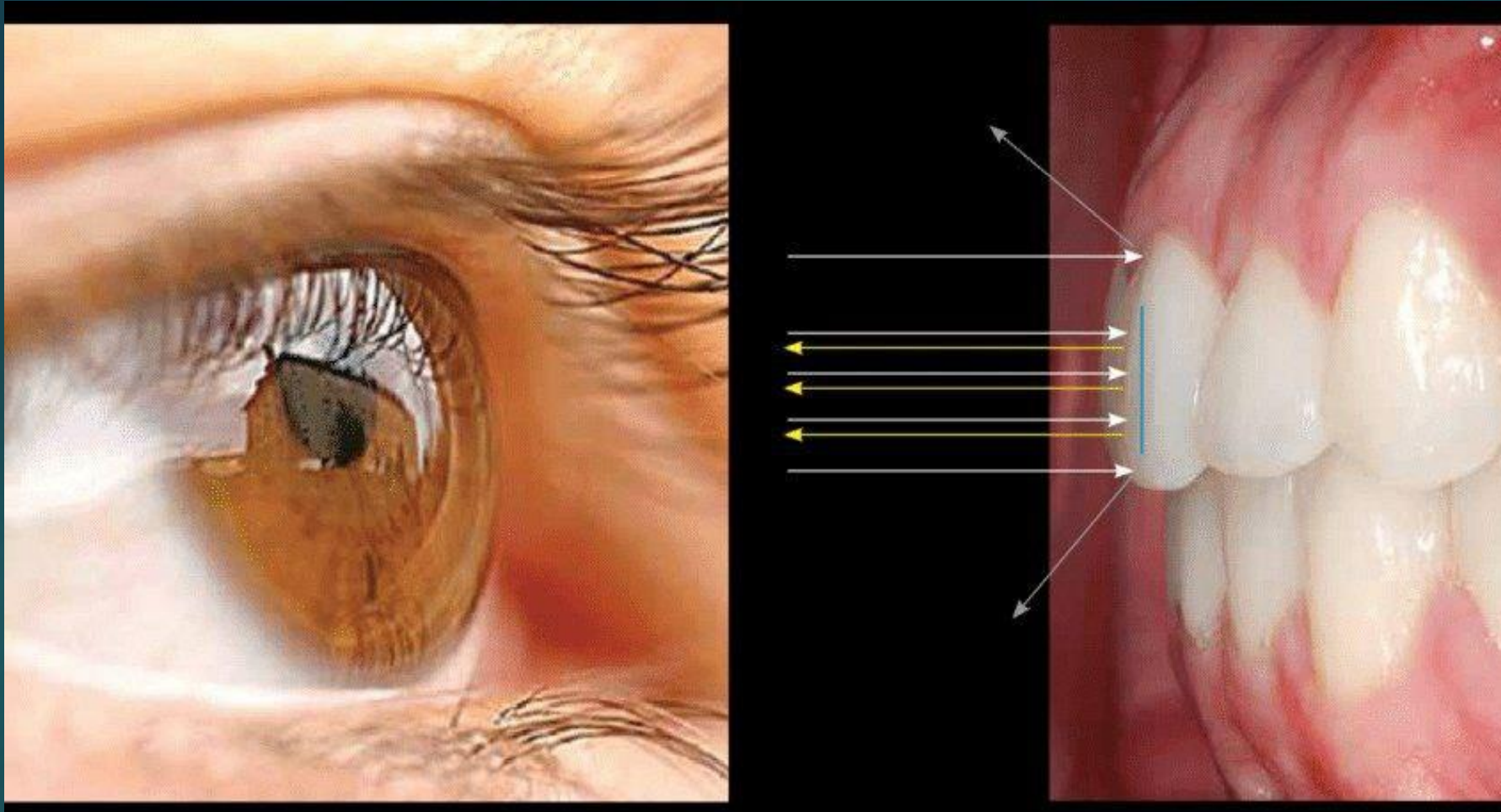
SATURATION *Chroma*



Luminosity *Value*



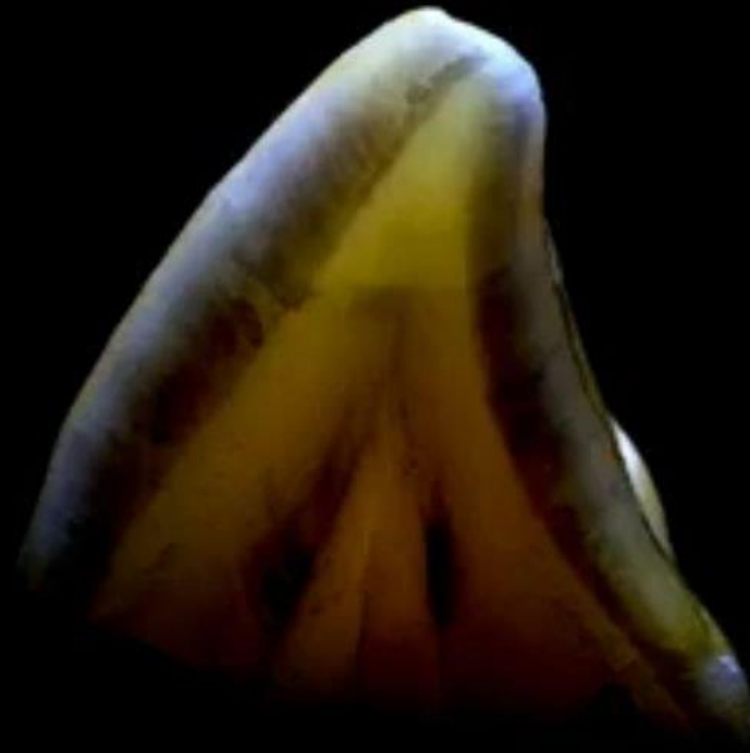




- White & yellow arrows (**reflection**) of light at the center of the crown
- Grey arrows (**deflection**) of light at the cervical and incisal borders

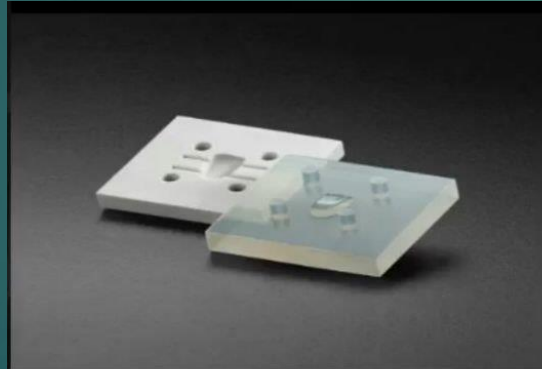
Enamel =convex
Dentine = concave

_Natural

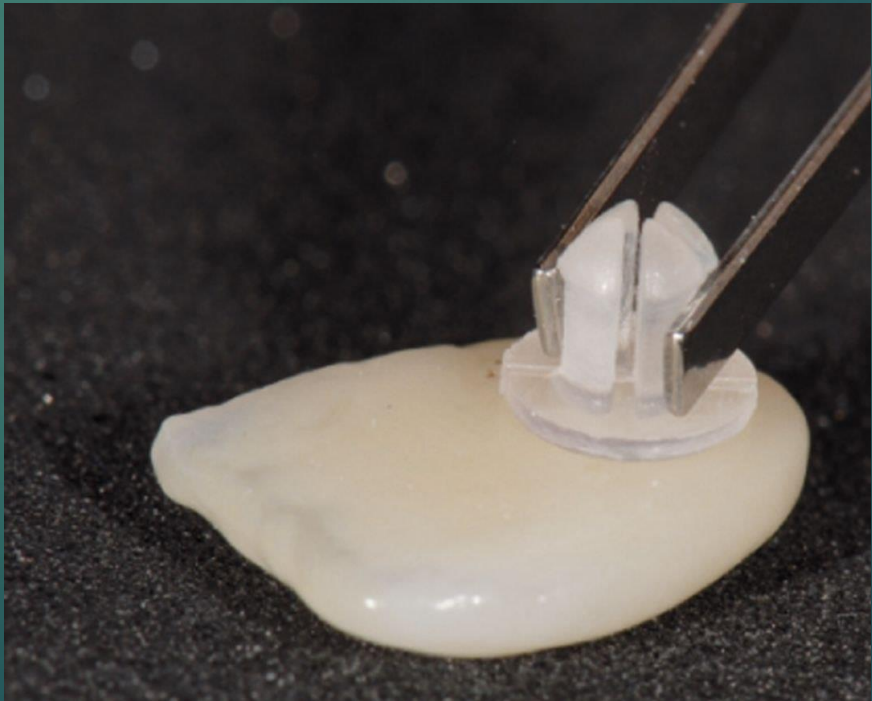
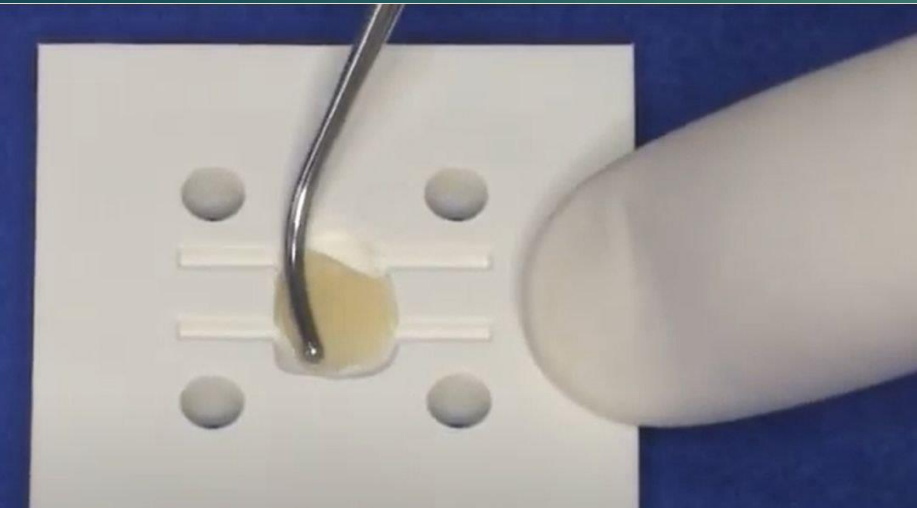
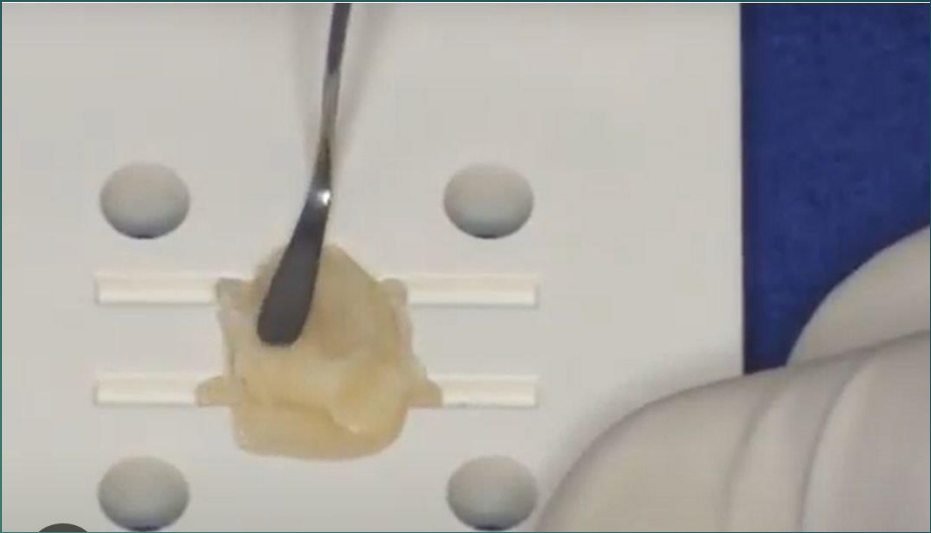


Shade selection

_Standard



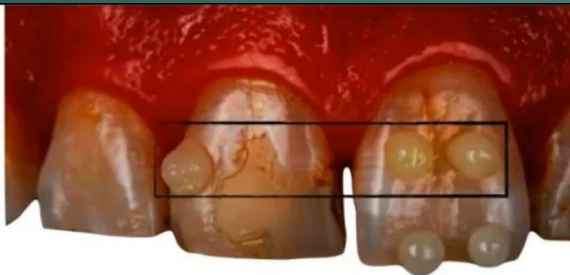
personalized_



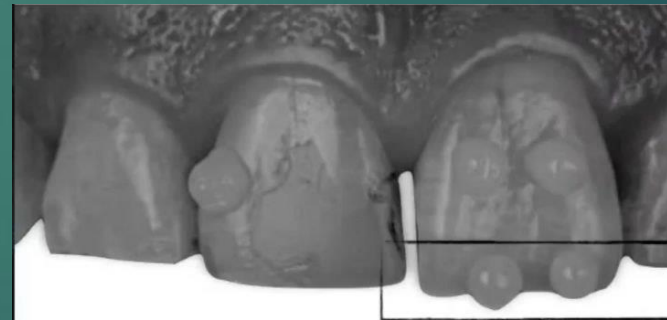
bubbles



- Polymerization
- photo

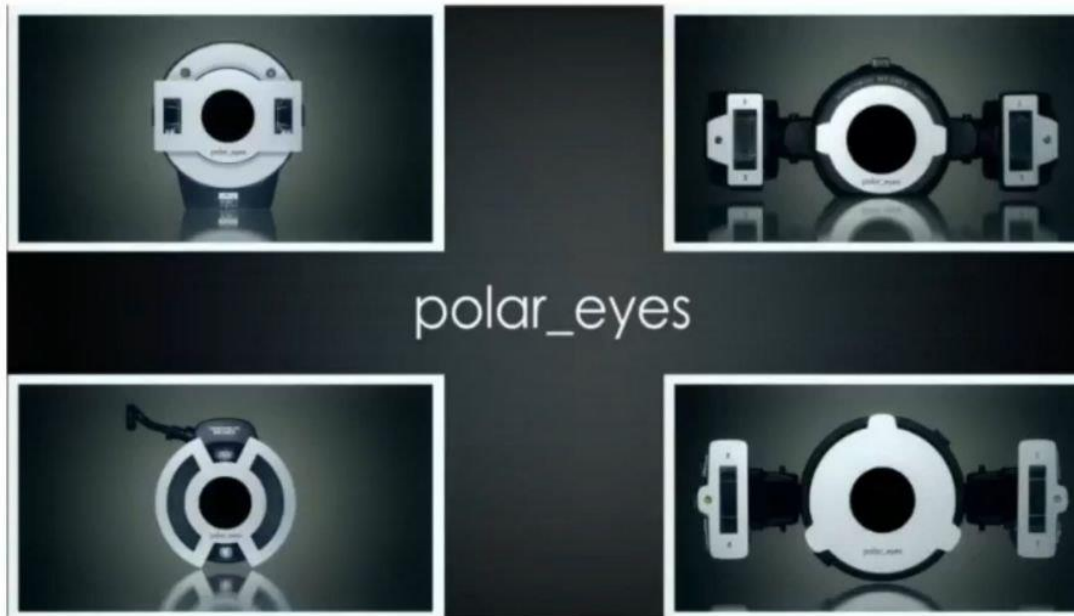


_High contrast
_Dentine shade



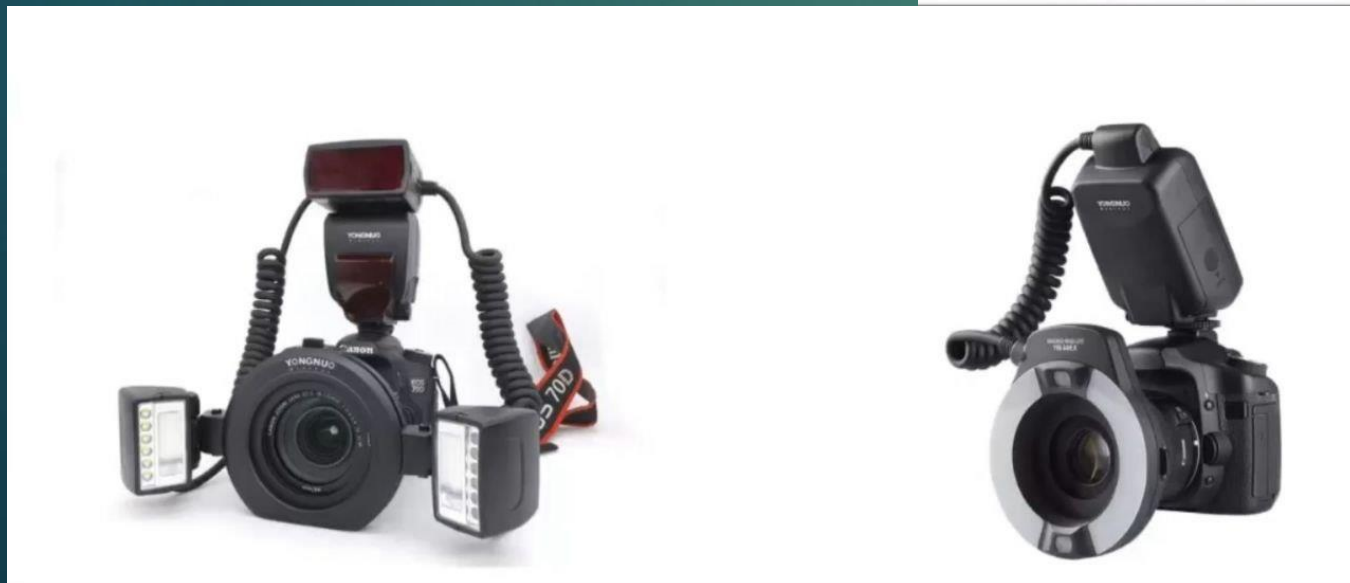
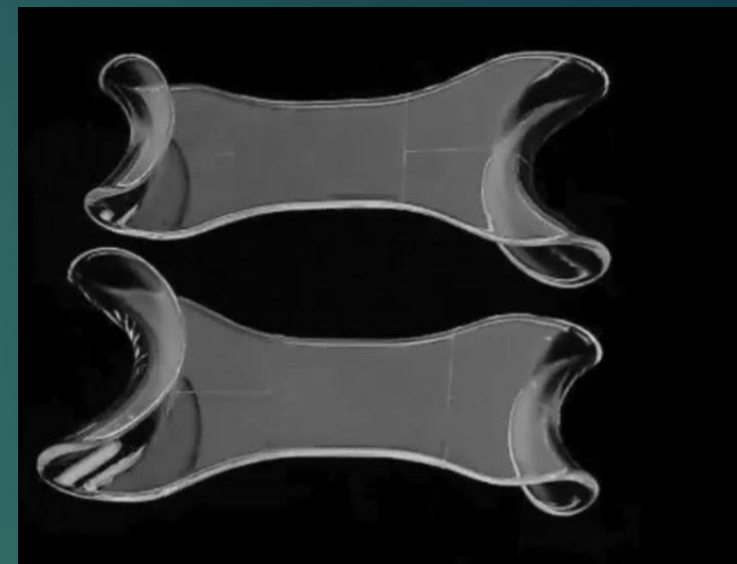
Black & white_
Enamel shade_

_Polar eyes

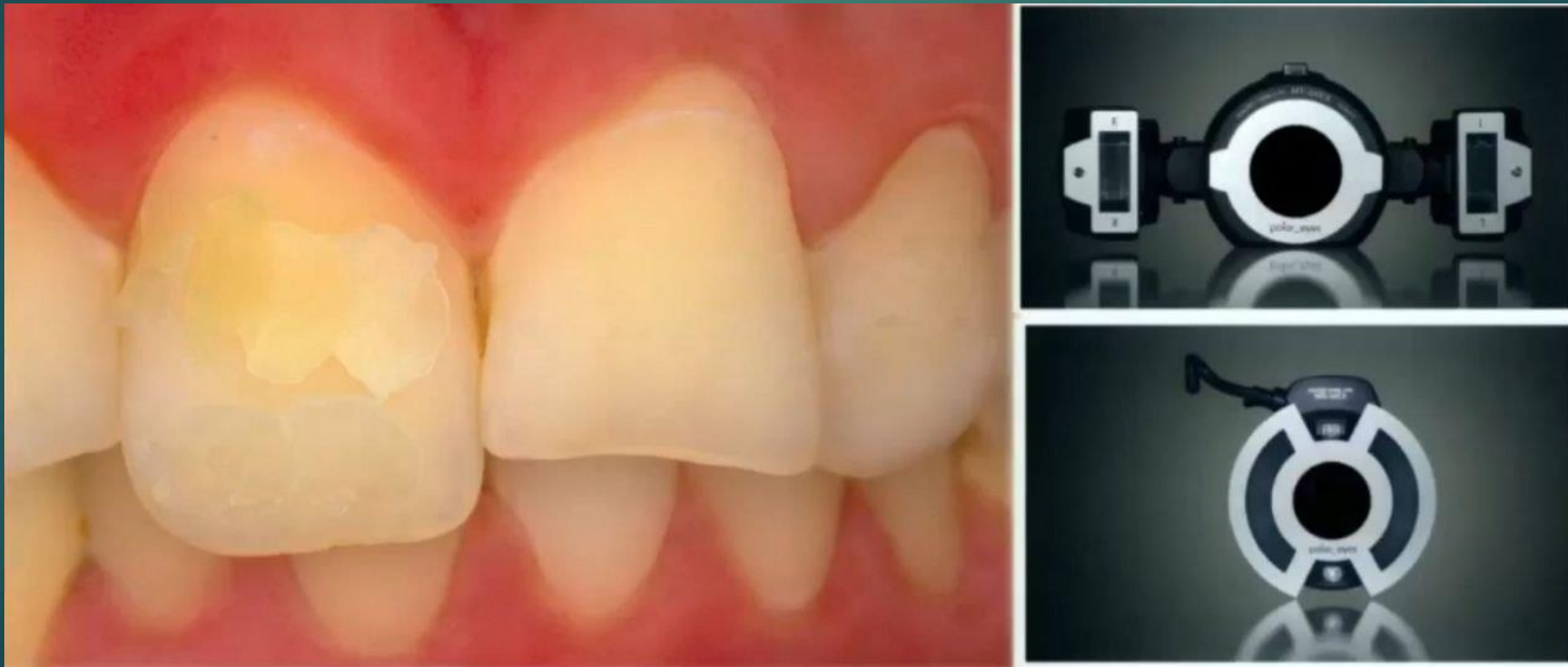








Polar eyes is a cross-polarization filter that makes it easy to eliminate unwanted reflections on the teeth that are caused by the flash.

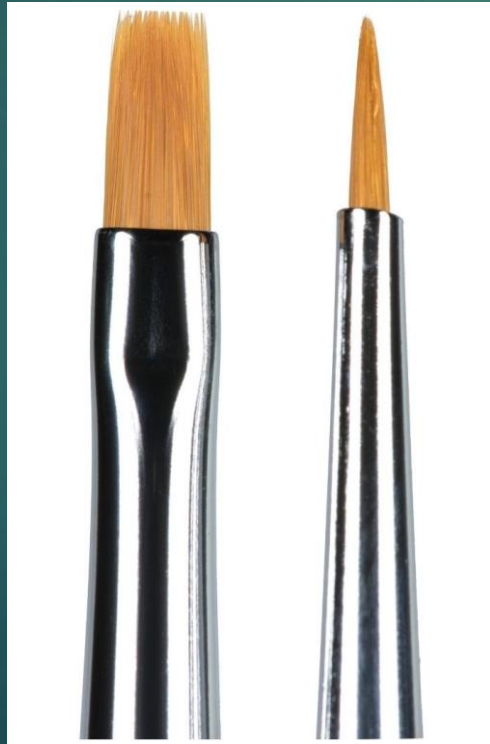


Dental loupes with light





Composite instruments

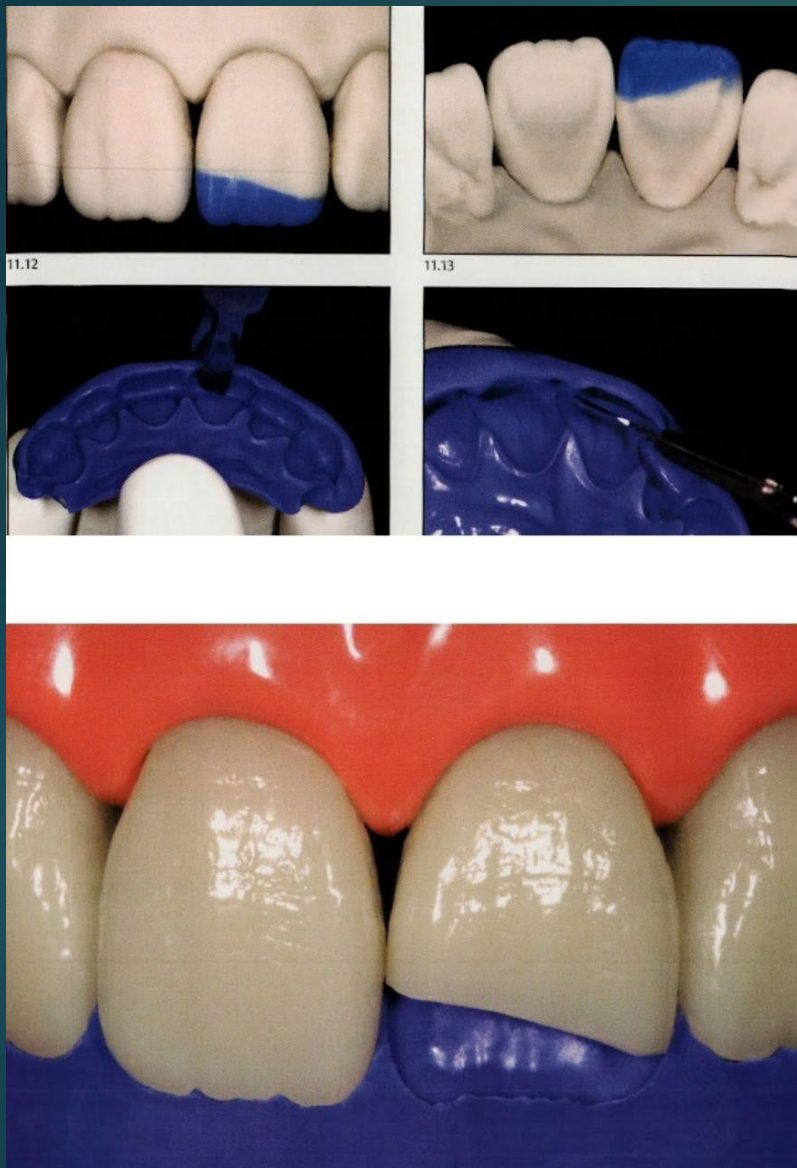


Silicon index

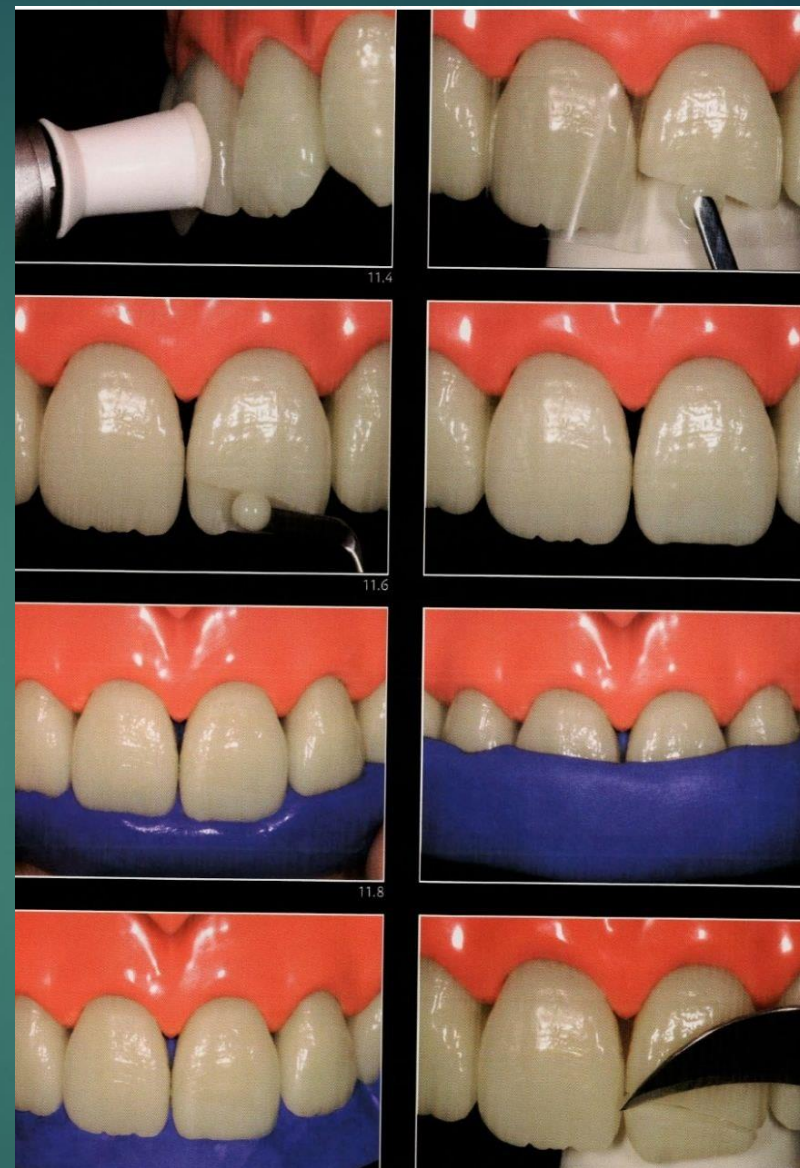
color harmony and contour of the restoration as close to nature by using the incremental method through the special matrix impression obtained from silicon

- **Correct occlusion**
- **Correct Incisal contour**





1- Wax –up



2- direct mock –up

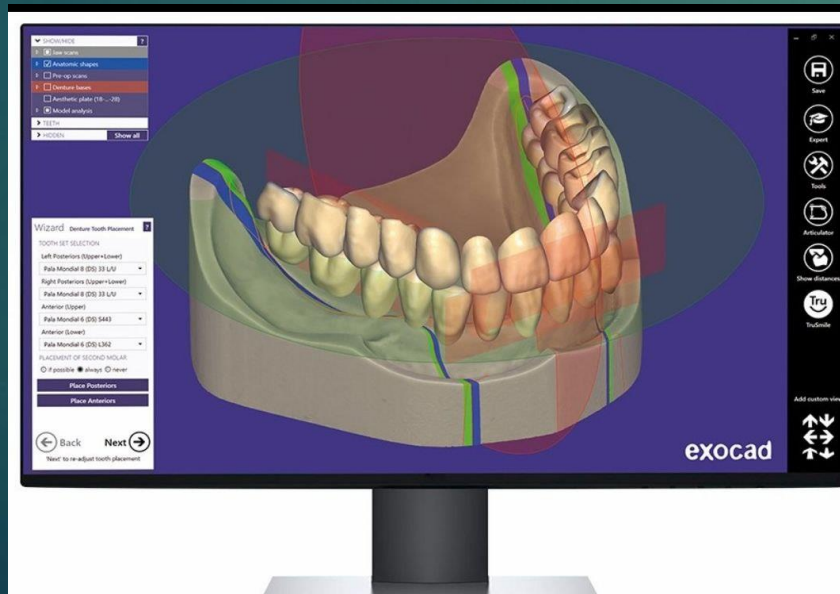
No prep
No etching
No adhesive



Old restoration

Addition silicon (silicon A) **better** than condensation silicon (silicon C)

Digital scanner



Isolation





Dry without drying

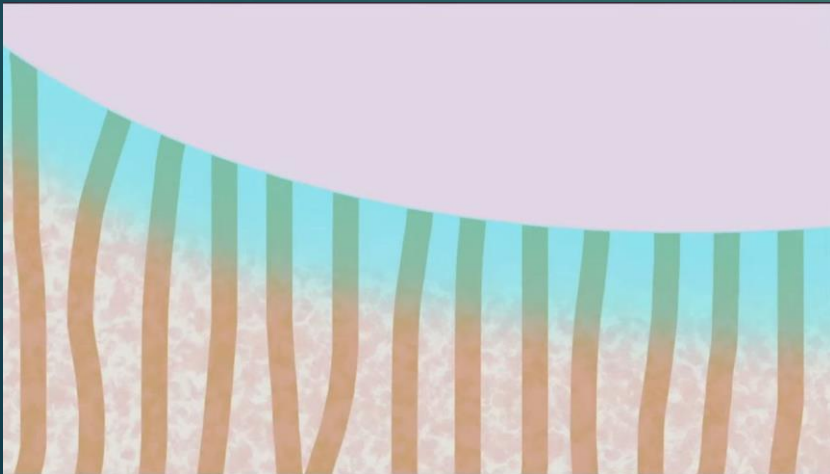
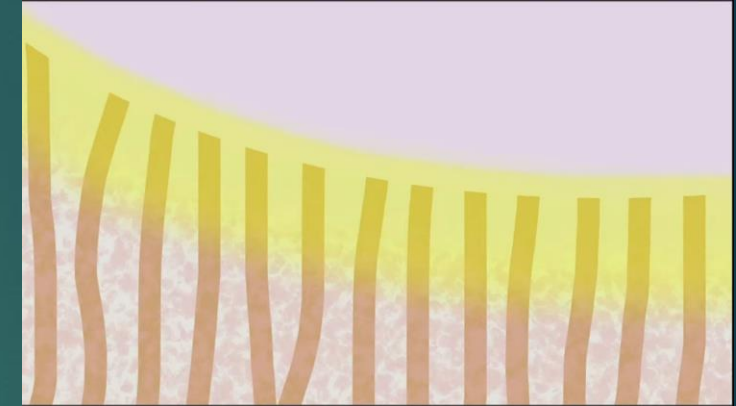
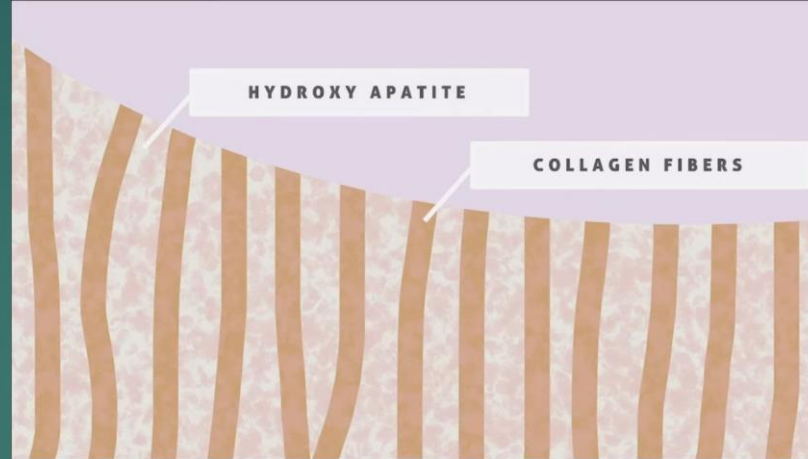


Post operative sensitivity

OVER DRYING

3

Completely drying the etched surface
with air



Universal bond

Selective enamel etching 15 sec.

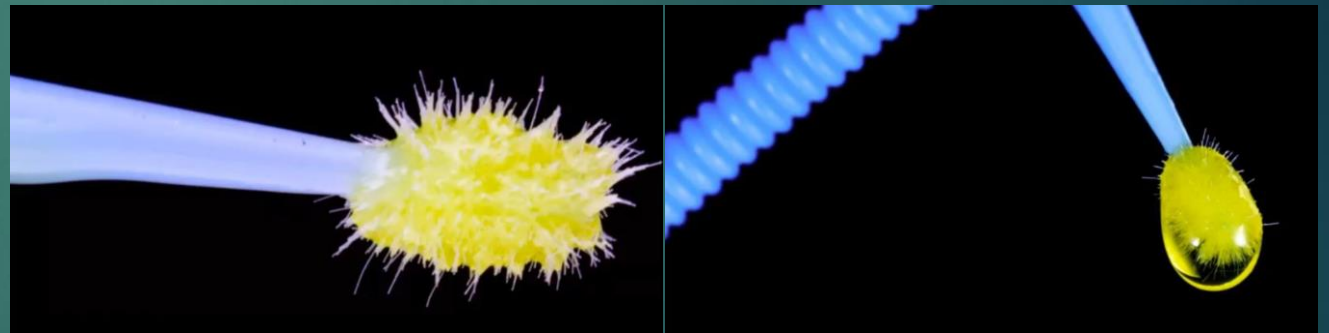
Don't etch the dentin

Rub the adhesive for 10 seconds

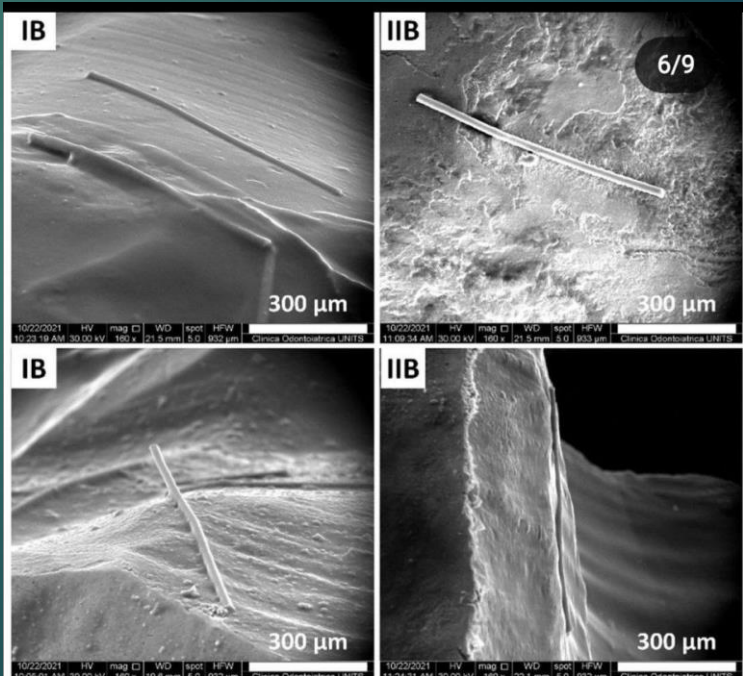
Apply 2 coats of adhesive

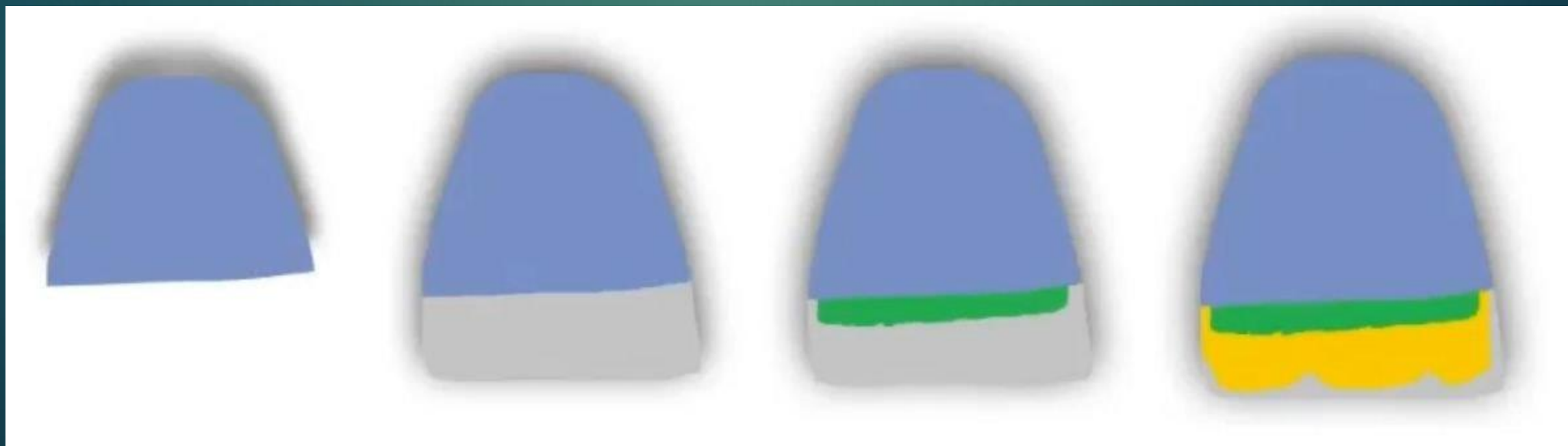
Blow air for 10 seconds

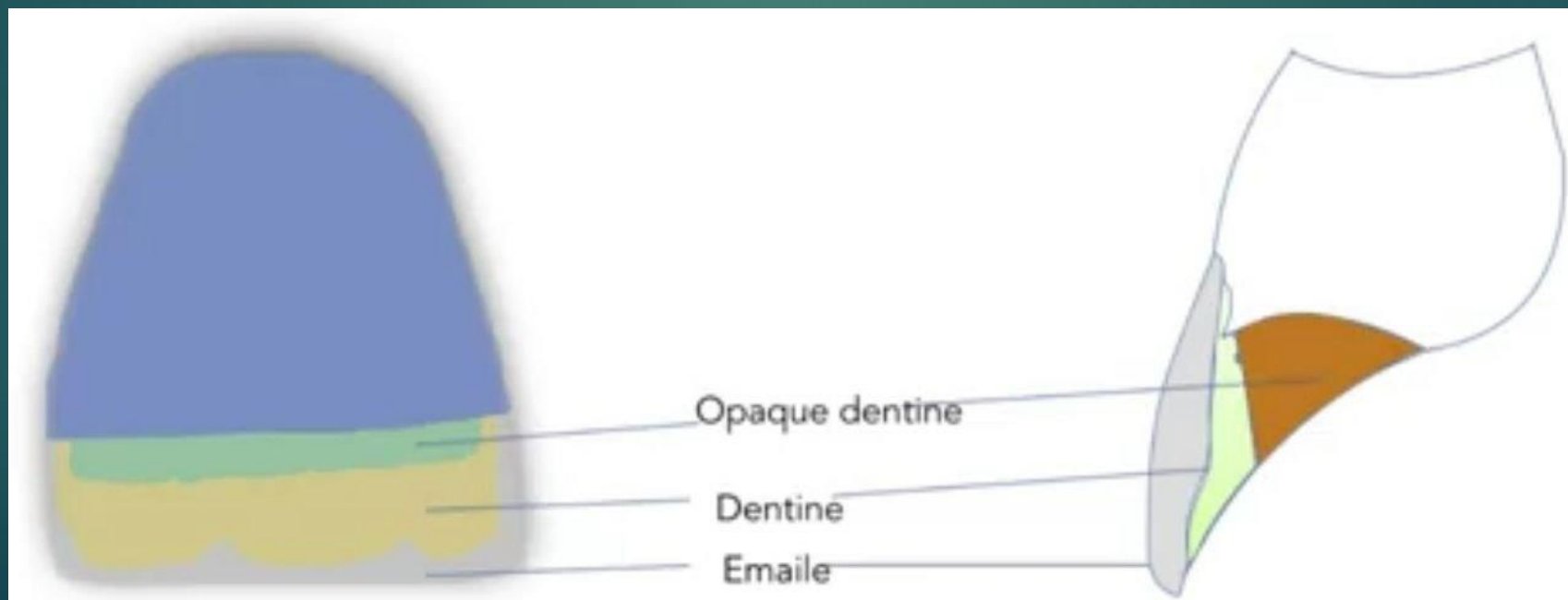
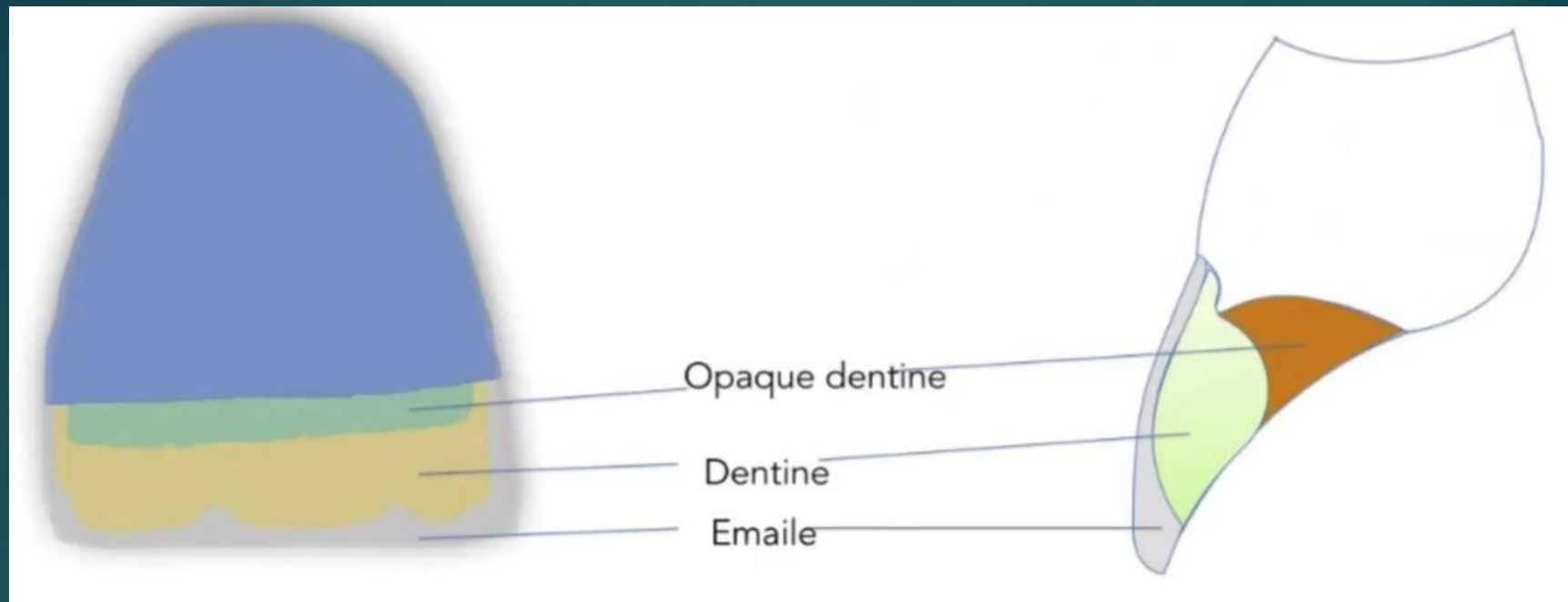
Solvent = water + alcohol

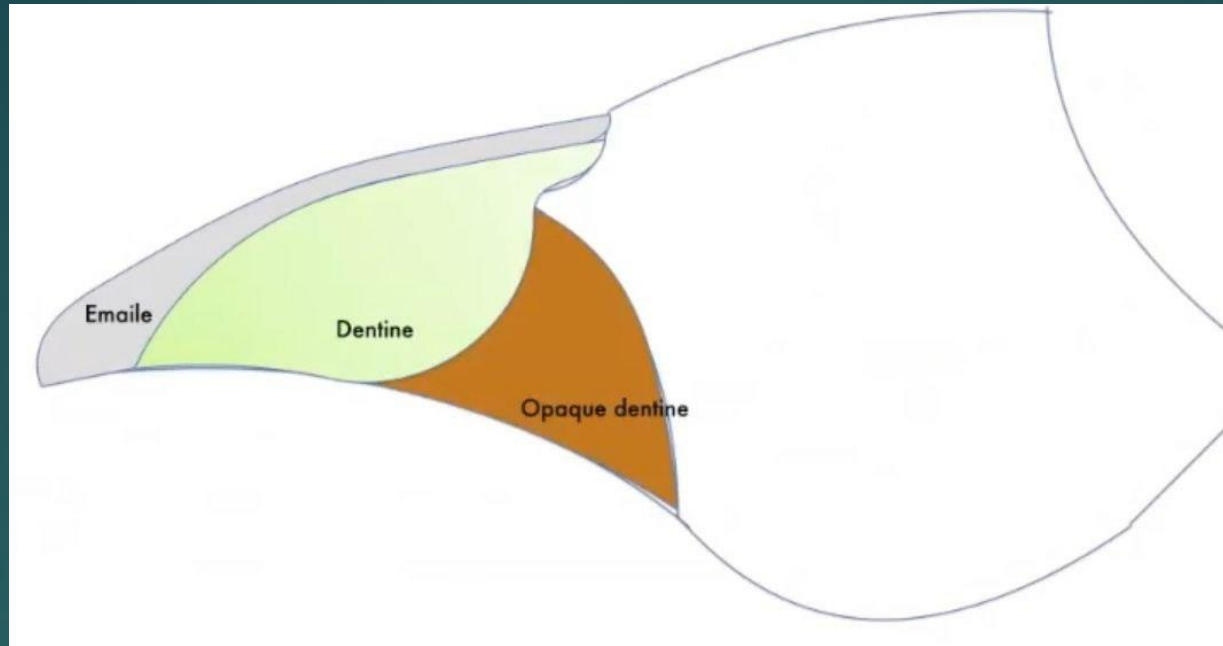


Adhesive

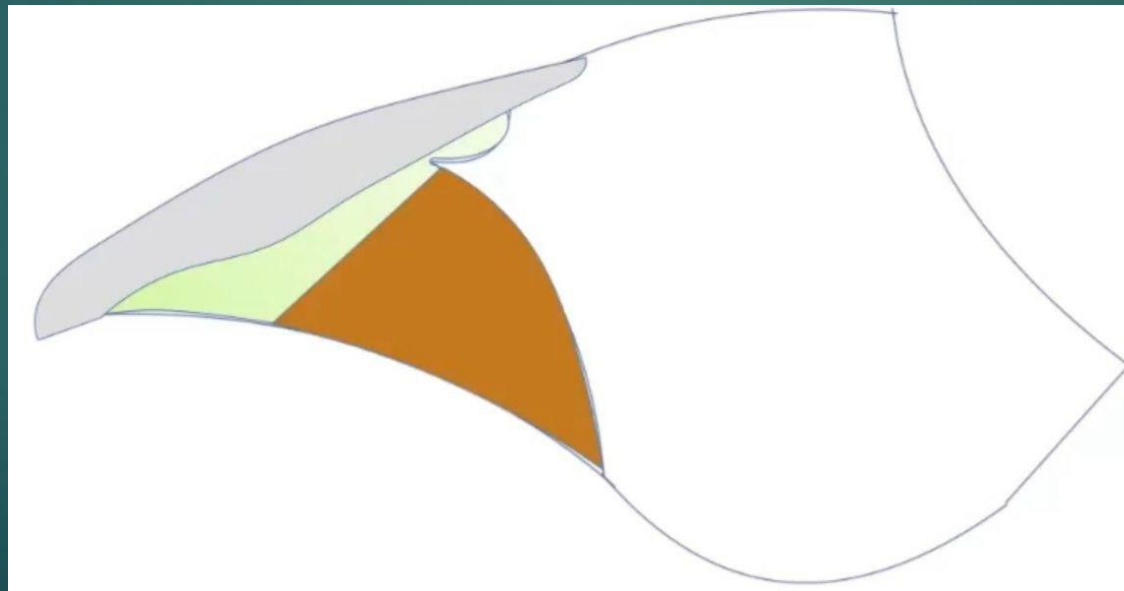


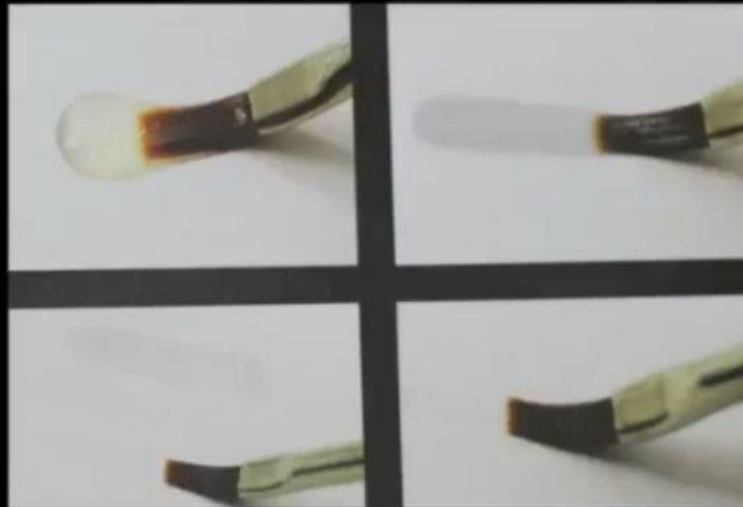




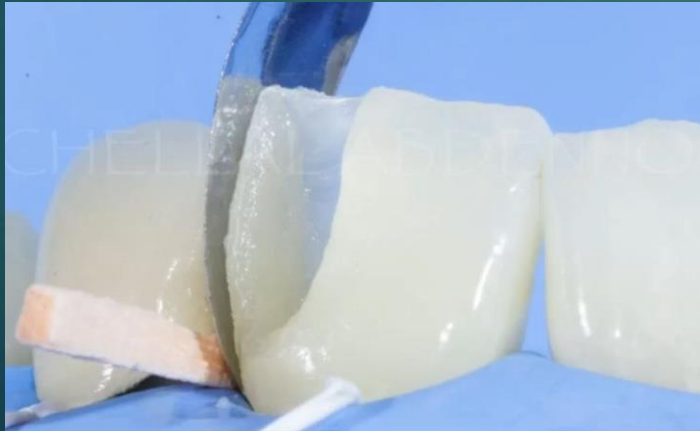
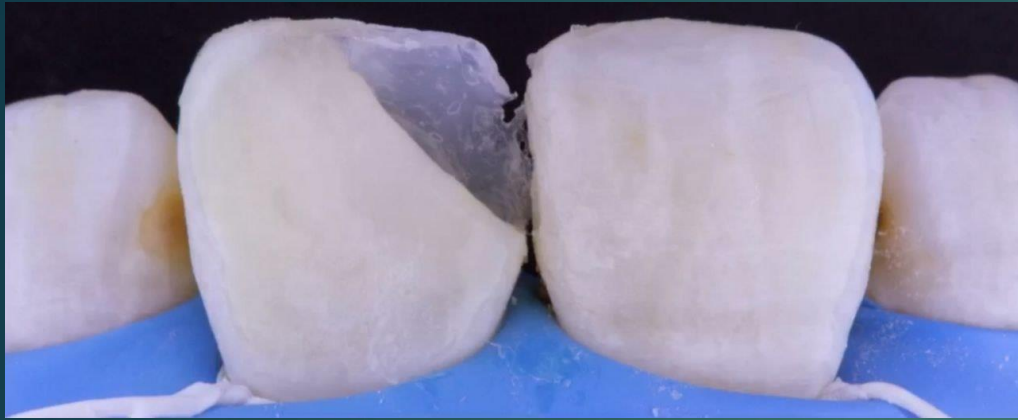


Enamel thickness
(0.8-0.9)mm





Brush humidification



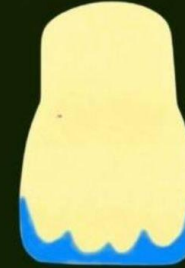
Opalescent type I

Consisting of three mamelons
Mesial , central and distal mamelon



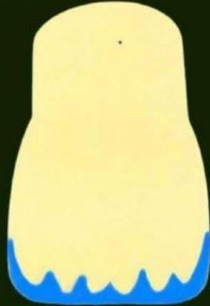
Opalescent type II

Consisting of four mamelons
Mesial , central (separated) and distal mamelon



Opalescent type III

Consisting of multiple mamelons effect



Opalescent type IV

Absent mamelons
It's seen as a straight line in the incisal edge



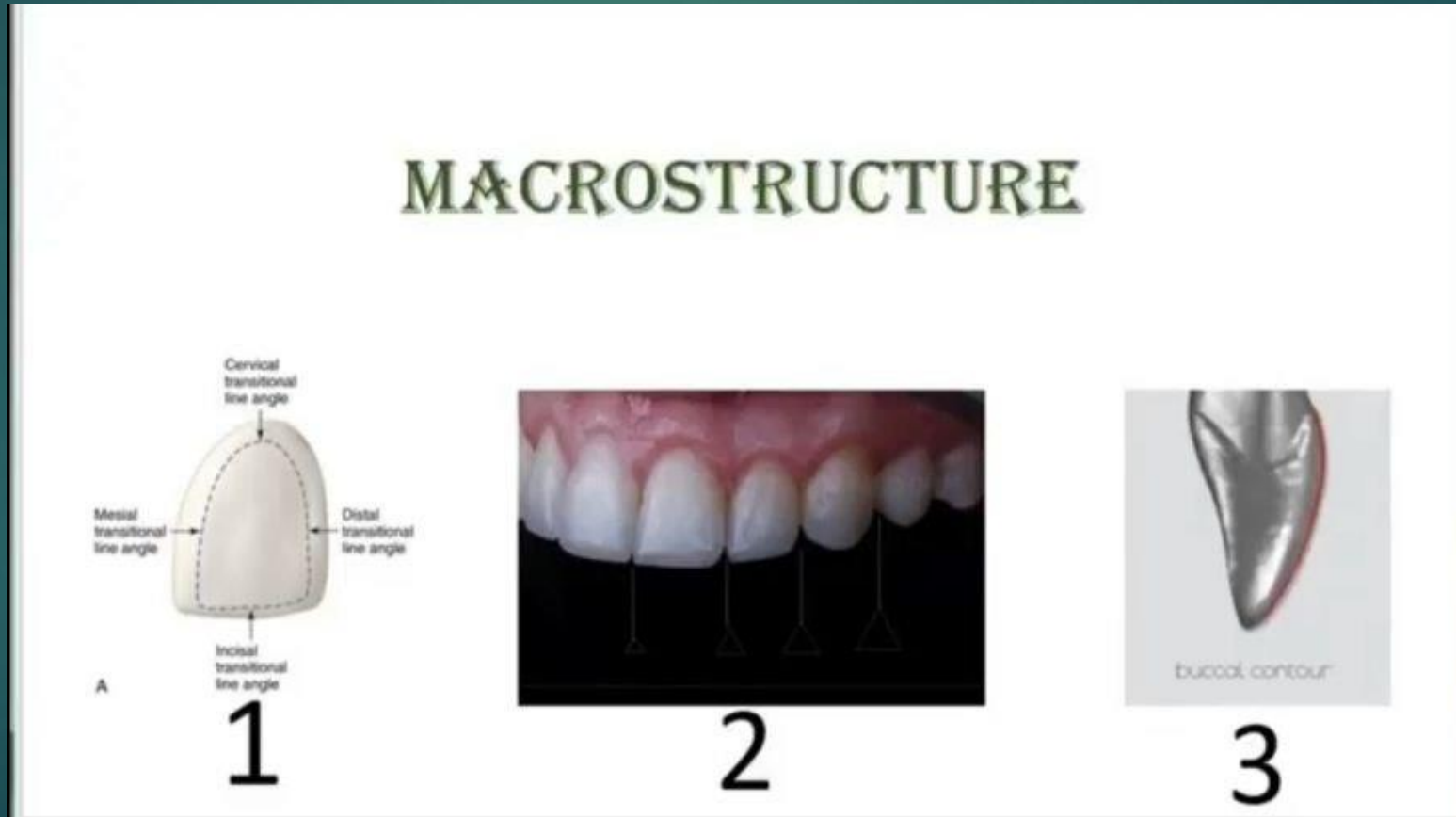
Opalescent type V

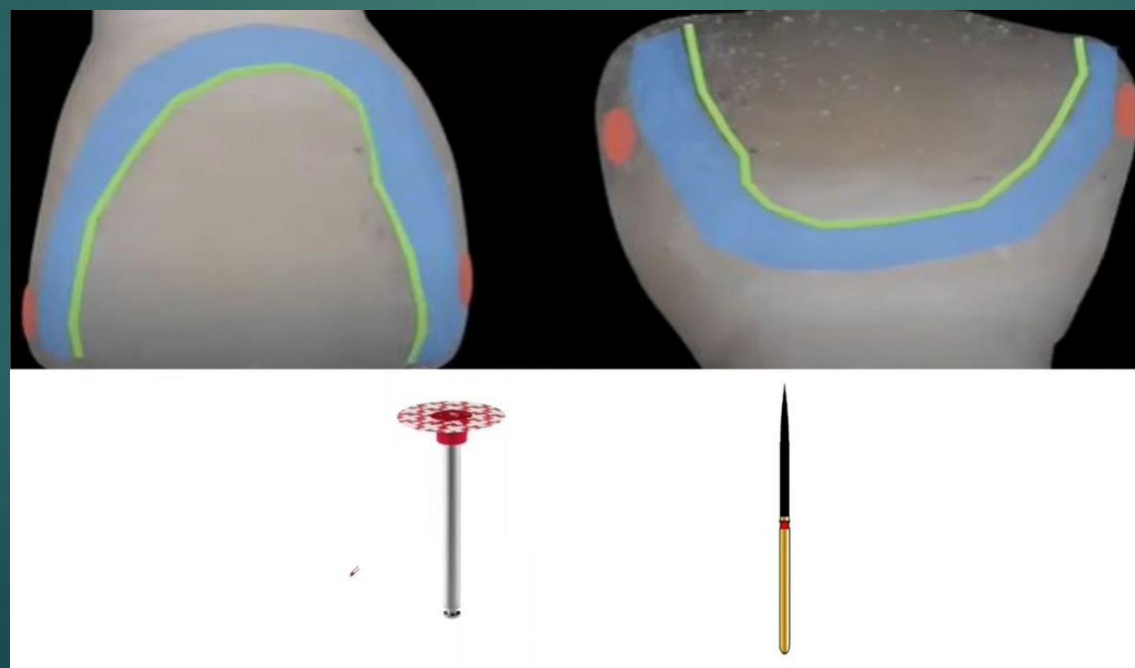
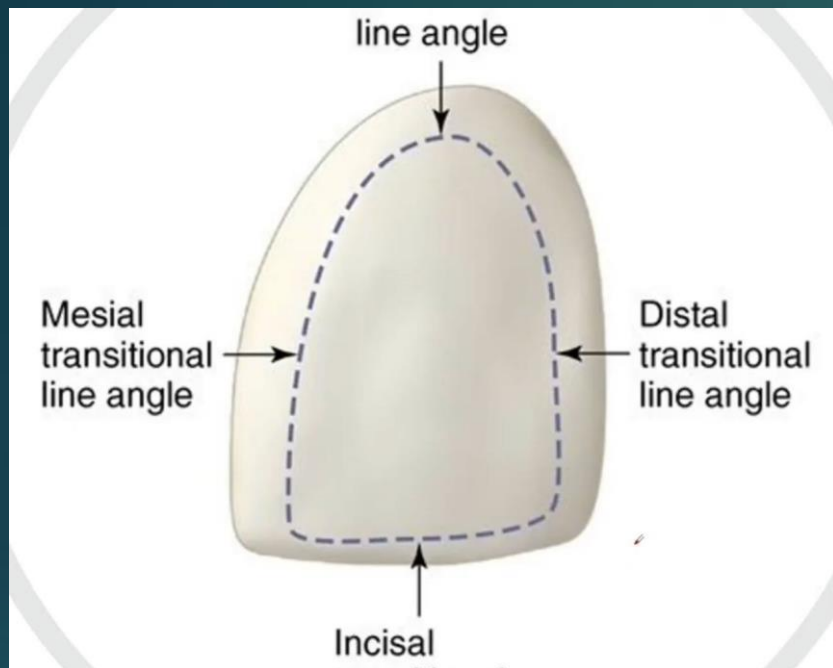
Proximal mamelons
Seen at the mesial and distal incisal angle



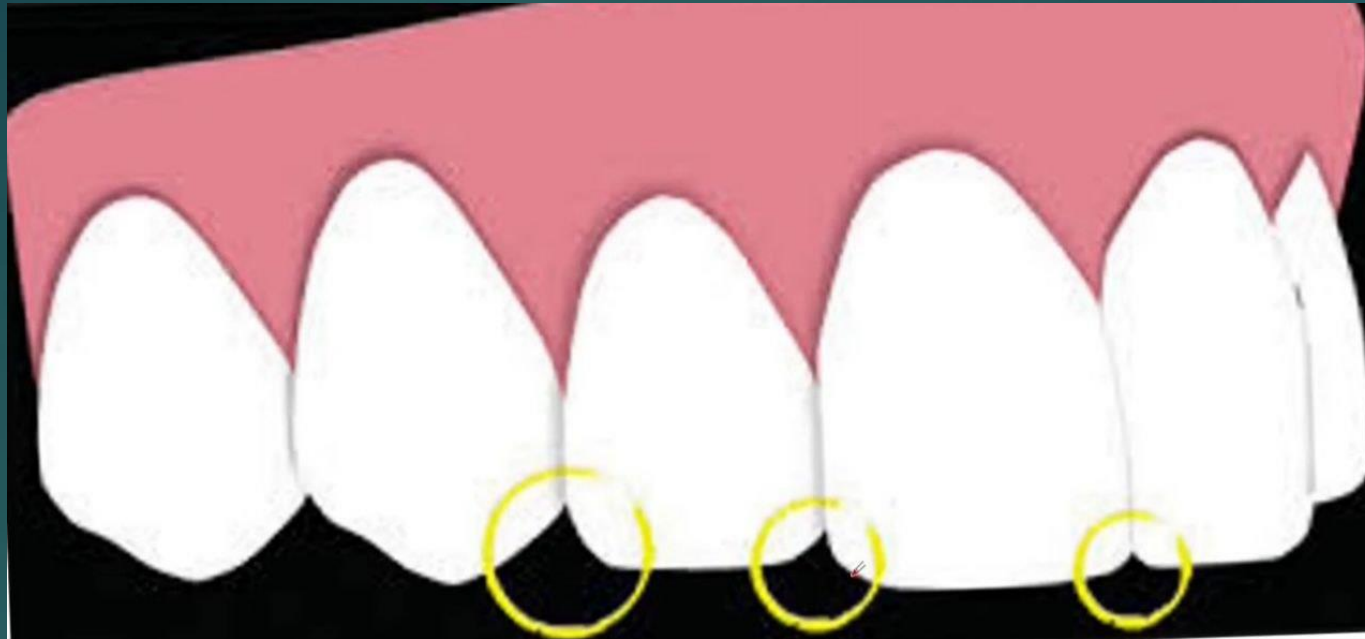
Finishing & polishing

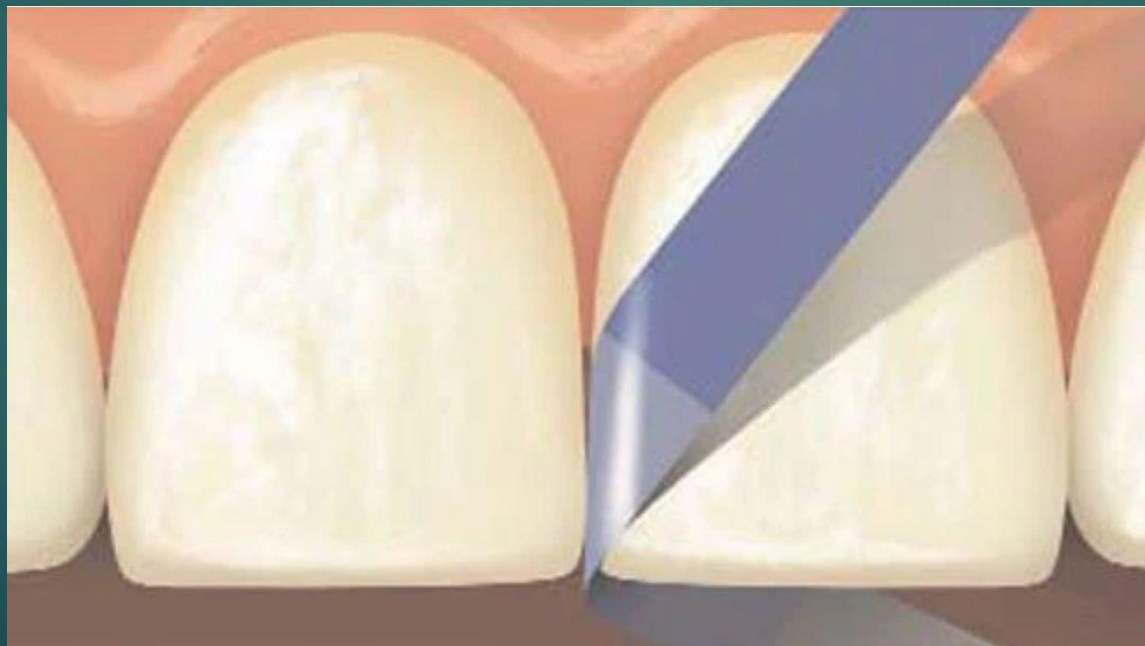
- * Macrosurface texture
- * Microsurface texture
- * High lustering shining surface











VERTICAL MACROTEXTURE



VERTICAL MACROTEXTURE



HORIZONTAL MACROTEXTURE



Fig.	801					
ISO	010	012	014	016	018	023

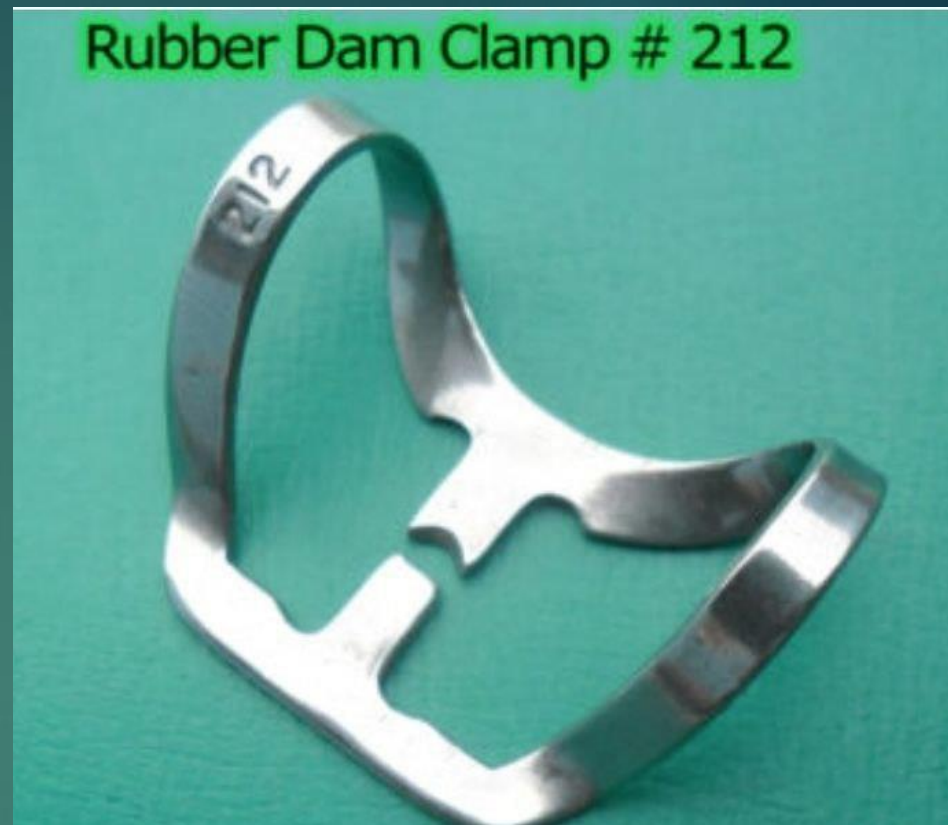
Polishing burs

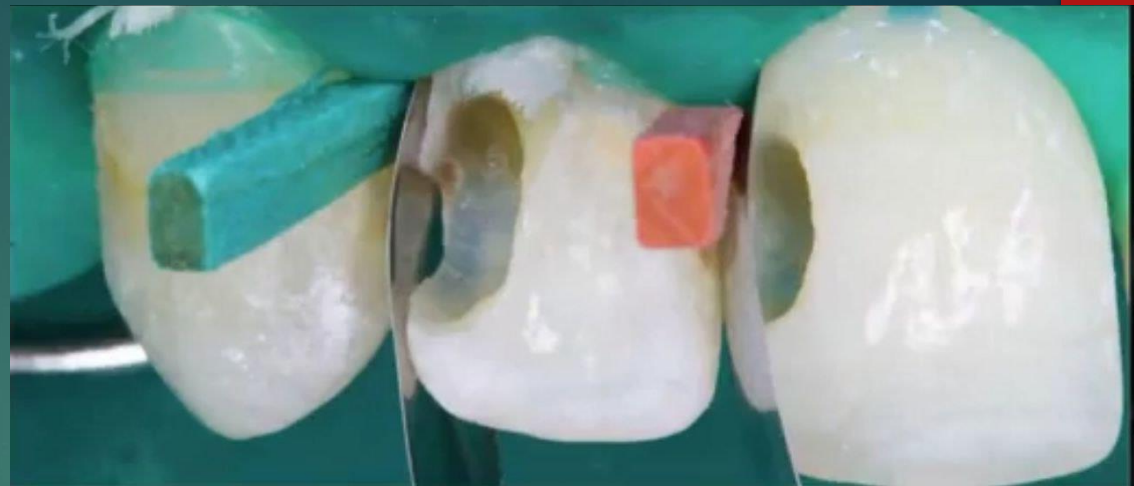


Halo technique









A photograph of a beach with waves crashing onto the shore. The words "THANK YOU" are written in the sand in the foreground. A solid red rectangle is positioned in the top right corner of the image.

THANK YOU