

File Edit View Favorites Tools Help

Google Search Share More

Suggested Sites Web Slice Gallery Page Safety Tools

Sign In

Iraqi Network Learning ENVIRONMENT

Home > Courses > First grade > Semester One > E-Learning-2016/17 Turn editing off

NAVIGATION

- Home
- Dashboard
- Current course
 - E-Learning-2016/17**
 - Participants
 - Badges
 - My courses

News forum

Topic 1 Edit

Topic 2 Edit

Topic 3 Edit

Topic 4 Edit

SEARCH FORUMS

Go

Advanced search

LATEST NEWS

Add a new topic...

(No news has been posted yet)

UPCOMING EVENTS

There are no upcoming events

Go to calendar...

New event...

RECENT ACTIVITY

Screenshot Added

A screenshot was added to your Drop box.

<http://inle.education/course/editsection.php?id=2026&sr=0>

File Edit View Favorites Tools Help

Google Search Share More

Suggested Sites Web Slice Gallery Page Safety Tools

Sign In

English (en)

INLE Iraq Network Learning ENVIRONMENT

HOME COURSES EELAFIT

Home > Courses > First grade > Semester One > E-Learning-2016/17 > Edit Topic 1

SUMMARY OF TOPIC 1

Expand all

General

Section name*

Use default section name (Topic 1)

Summary

Remove checkbox

English (en) ▾

 **INLE**
Iraqi Network Learning
ENVIRONMENT

HOME COURSES EELAFIT ▾

Home » Courses » First grade » Semester One » E-Learning-2016/17 » Edit Topic 1

SUMMARY OF TOPIC 1

▸ Expand all

▾ General

Section name+
Introduction to Moodle Use default section name [Topic 1]

Summary ⊕





File Edit View Favorites Tools Help

Google Search Share More » Sign In


Suggested Sites Web Slice Gallery Page Safety Tools

▸ Expand all

▾ General

Section name+
Introduction to moodle Use default section name [Topic 1]

Summary ⊕




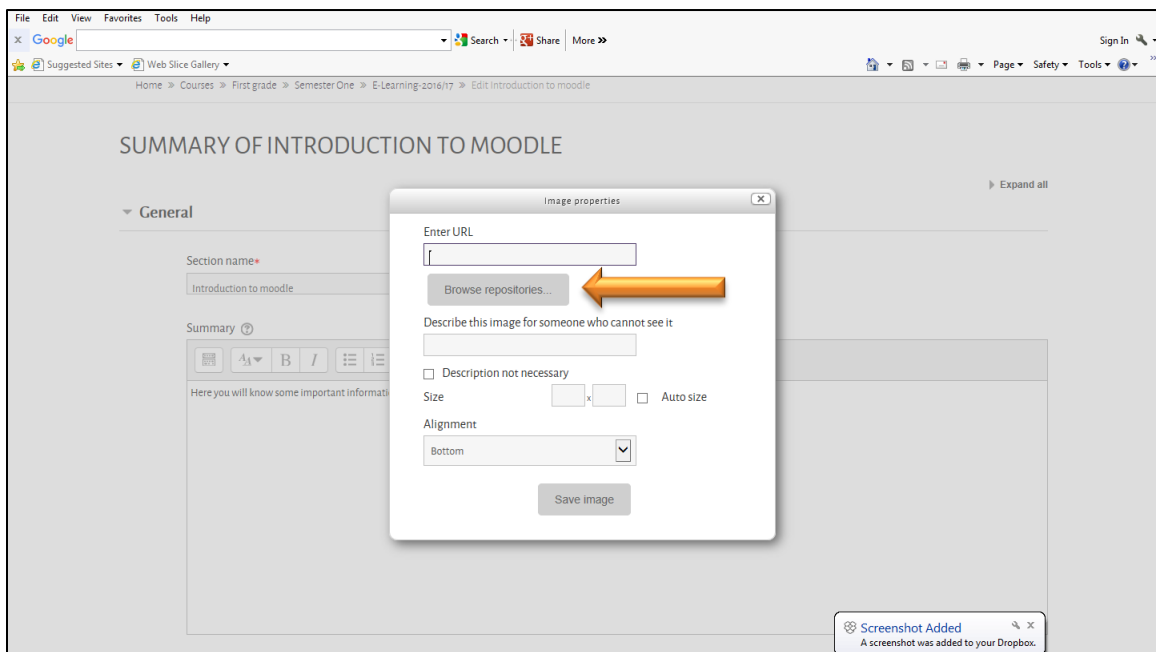
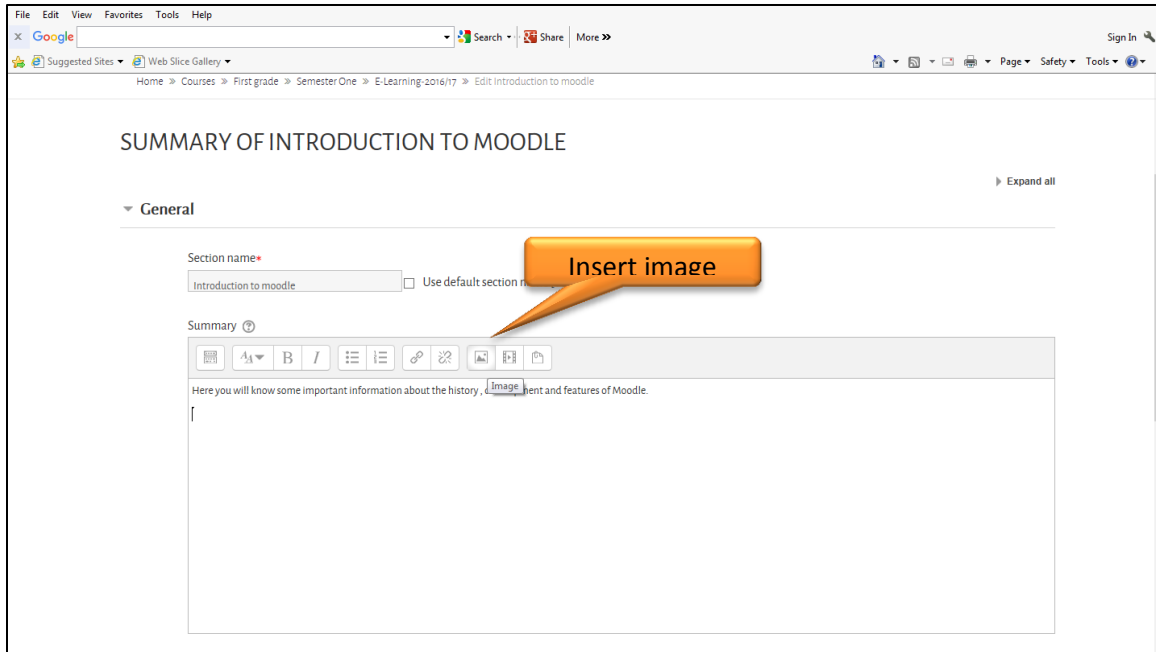
Here you will know some important information about the history , development and features of Moodle [

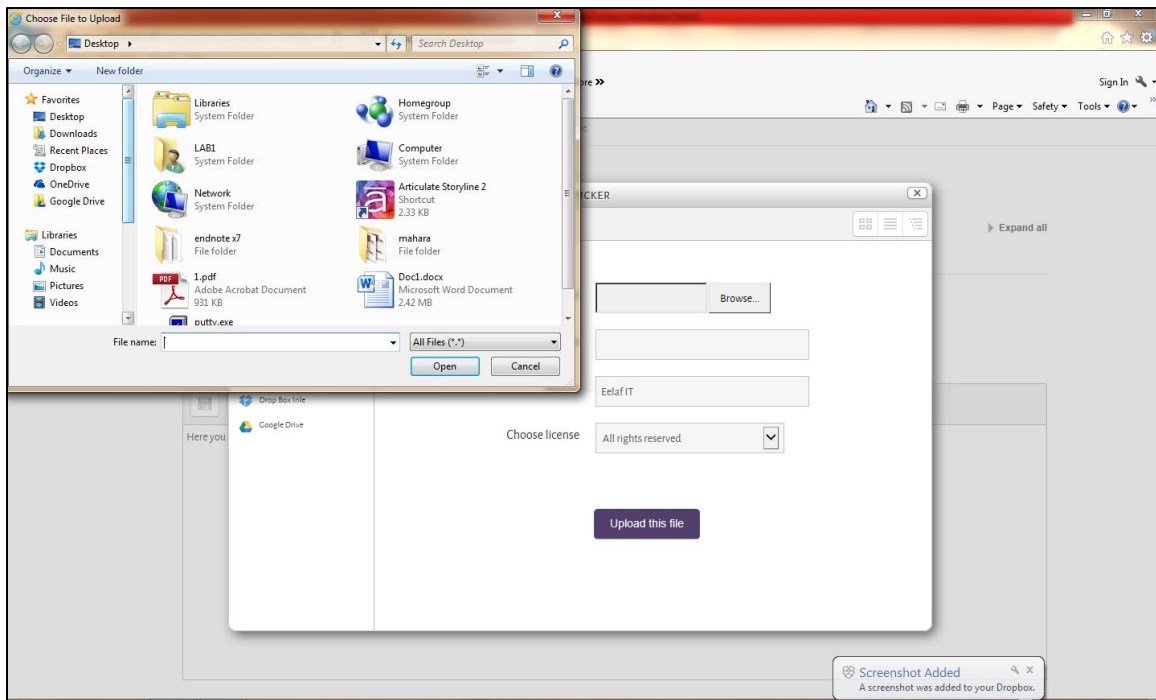
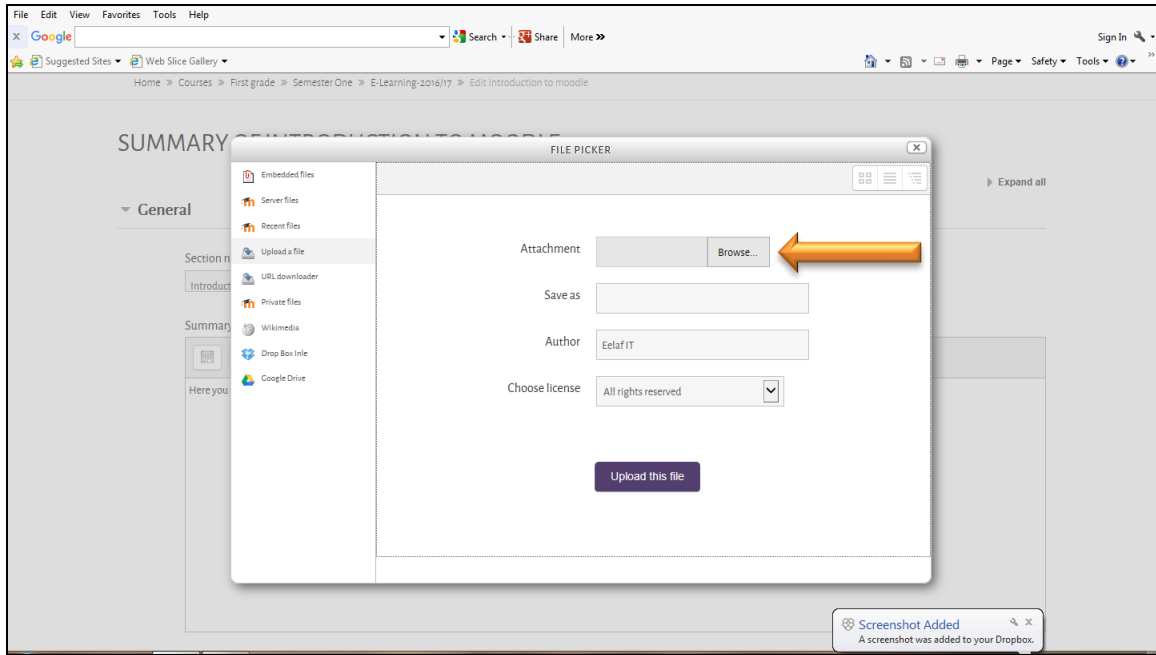
▸ Restrict access

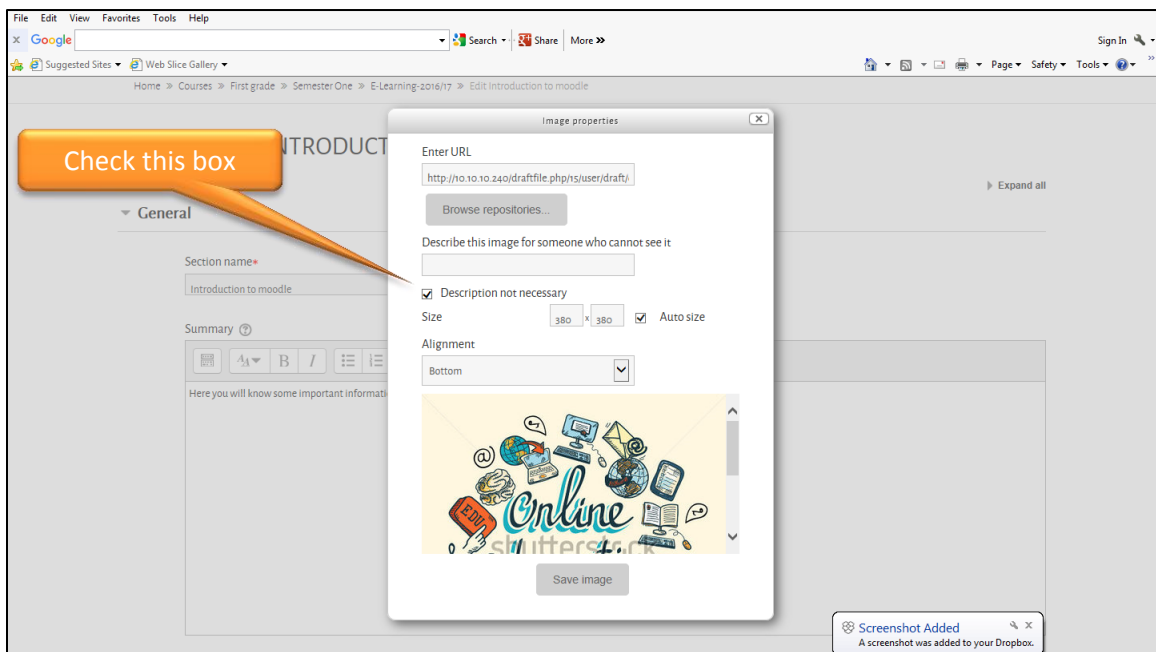
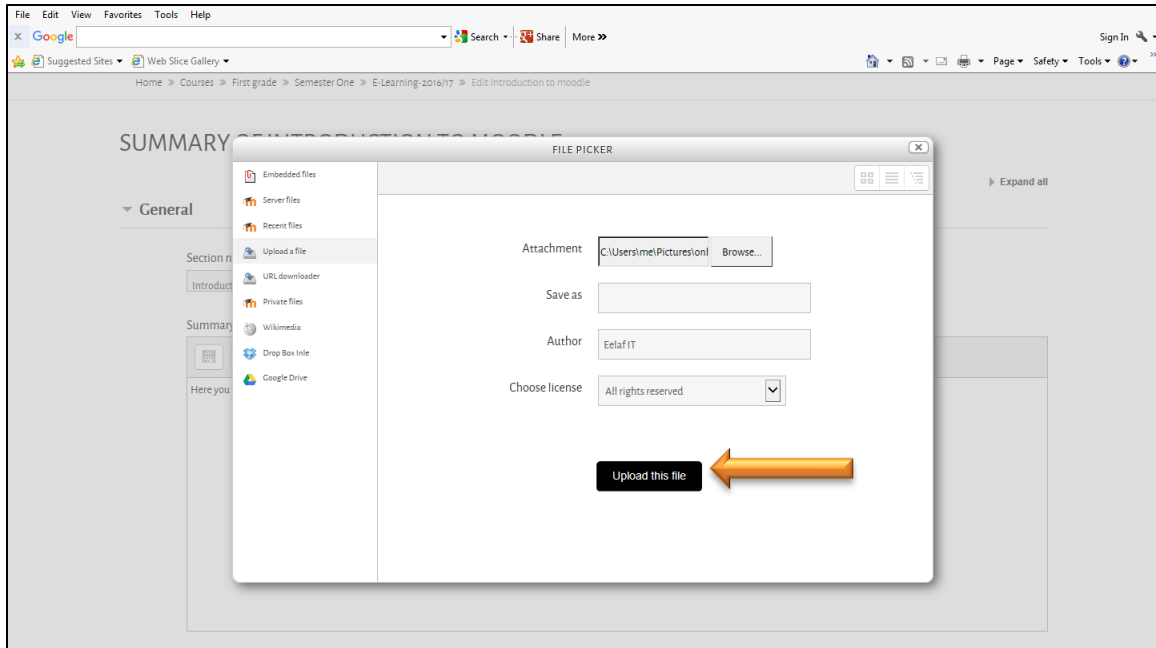
Save changes Cancel

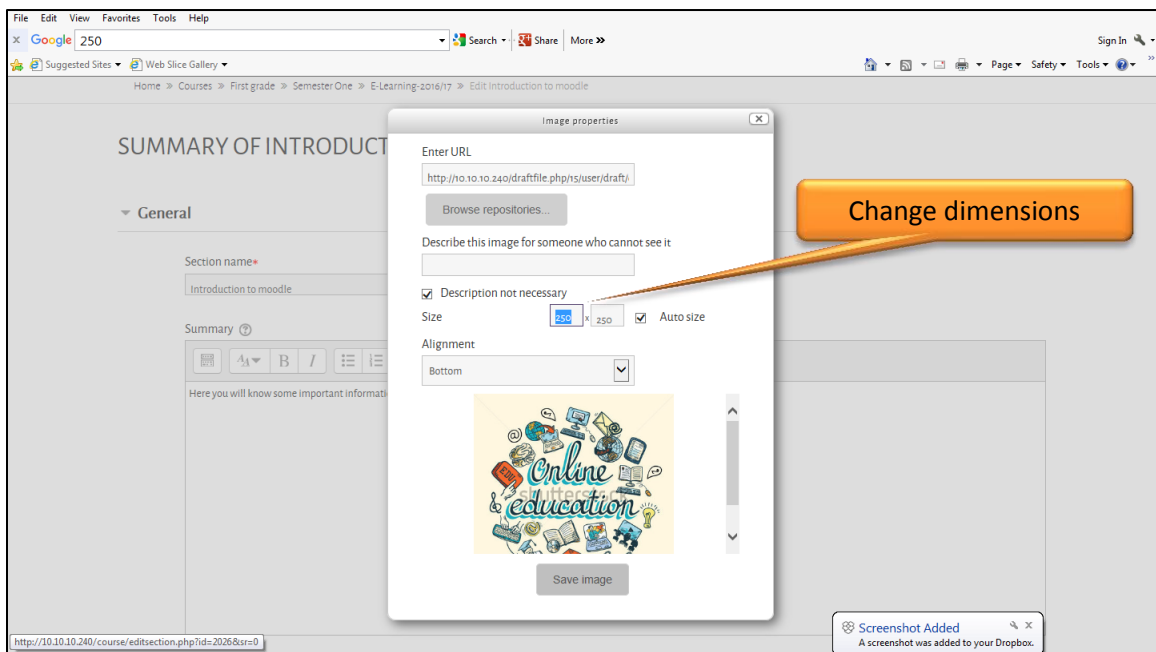
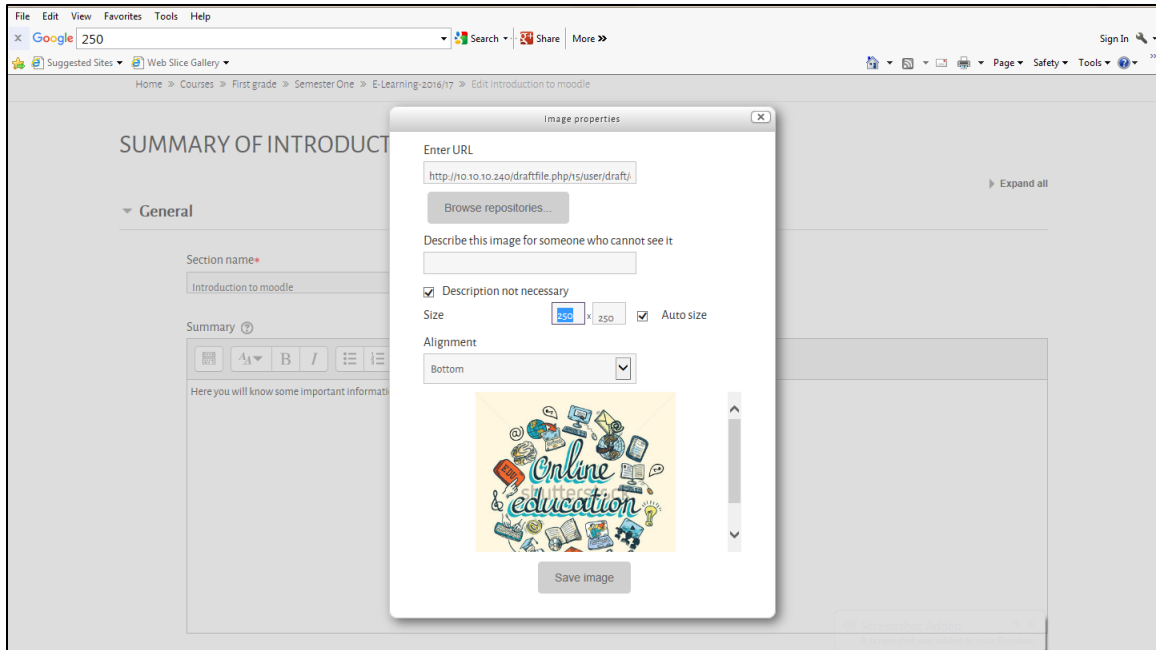
EN 06:01 ٢٠١٧/١٠/١٤











File Edit View Favorites Tools Help

Google Search Share More >>

Suggested Sites Web Slice Gallery

Section name*
 Introduction to moodle Use default section name [Topic 1]

Summary

Here you will know some important information about the history , development and features of Moodle

Restrict access

Save changes

There are required fields in this form marked *

http://10.10.10.240/course/editsection.php

File Edit View Favorites Tools Help

Google Search Share More >>

Suggested Sites Web Slice Gallery

Current course

- E-Learning-2016/17
 - Participants
 - Badges
 - My courses

ADMINISTRATION

- Course administration
 - Turn editing off
 - Activity chooser off
 - Edit settings
 - Course completion
 - Users
 - Filters
 - Reports
 - Grades
 - Gradebook setup
 - Outcomes
 - Badges
 - Backup
 - Restore

Introduction to moodle

Here you will know some important information about the history , development and features of Moodle.

SPSS

+ Add an activity or resource

Topic 2

+ Add an activity or resource

Topic 3

+ Add an activity or resource

LATEST NEWS

Add a new topic...
 (No news has been posted yet)

UPCOMING EVENTS

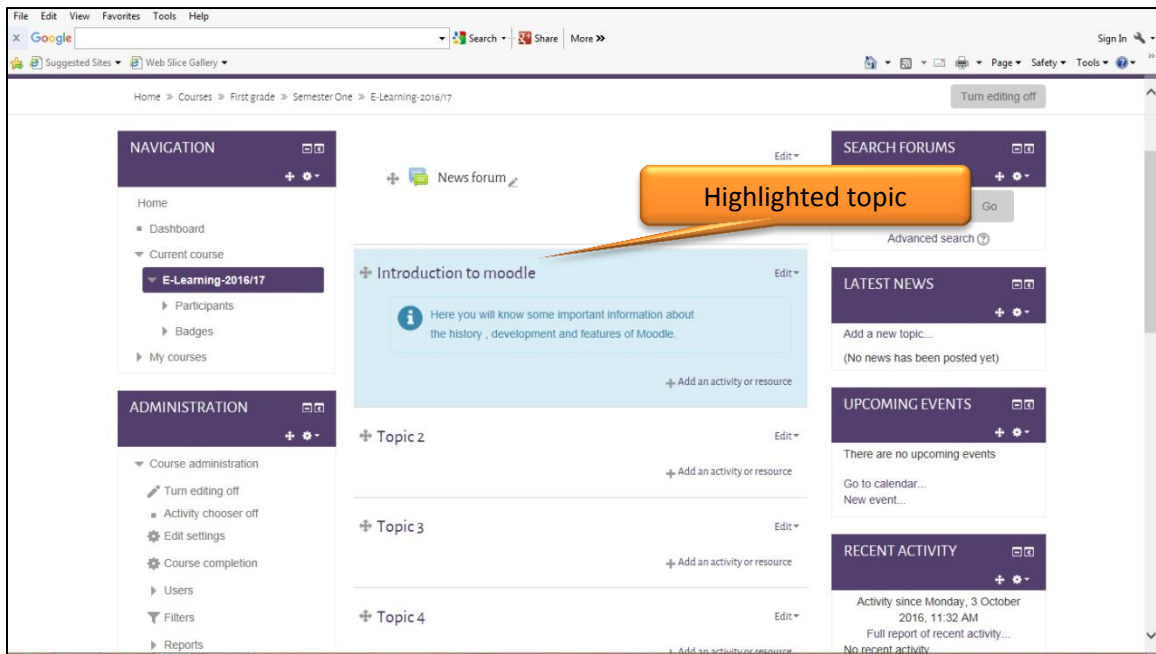
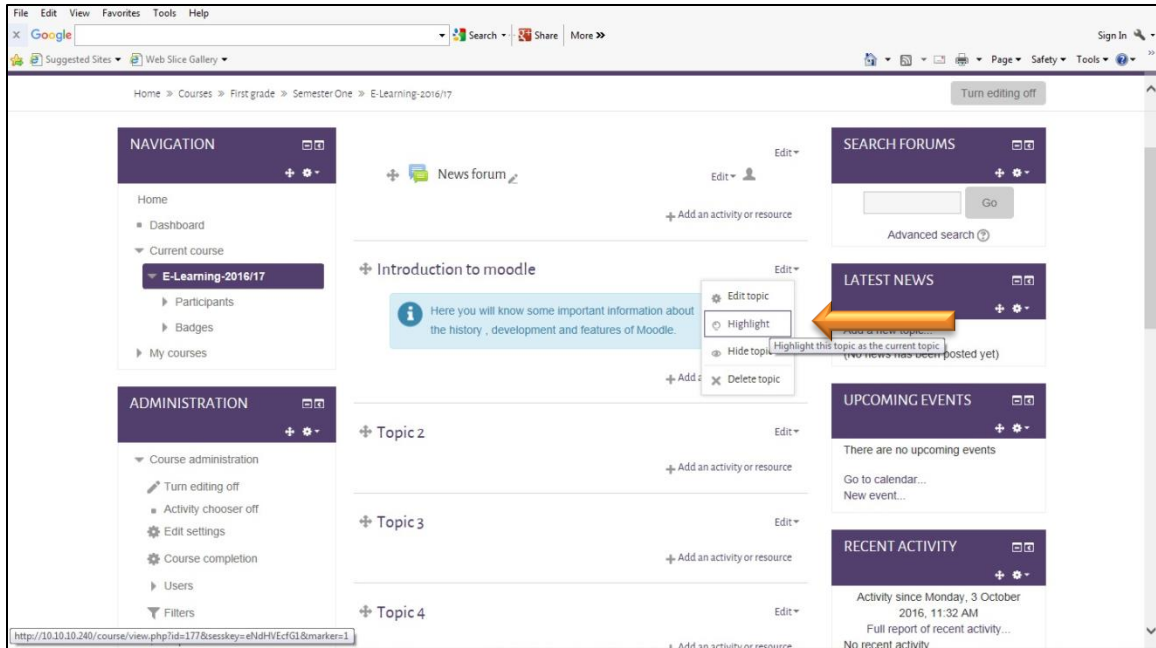
There are no upcoming events
 Go to calendar...
 New event...

RECENT ACTIVITY

Activity since Tuesday, 4 October 2016, 8:48 AM
 Full report of recent activity...

COURSE UPDATES:

Added File
 SPSS



This screenshot shows a Moodle course page in edit mode. The breadcrumb trail is "Home > Courses > First grade > Semester One > E-Learning-2016/17". The page layout includes a left sidebar with "NAVIGATION" and "ADMINISTRATION" sections. The main content area features a "News forum" and a list of topics: "Introduction to moodle", "Topic 2", "Topic 3", and "Topic 4". The "Introduction to moodle" topic is highlighted in blue and has a context menu open over it. The menu options are "Edit topic", "Highlight", "Hide topic", and "Delete topic". An orange arrow points to the "Hide topic" option. The right sidebar contains "SEARCH FORUMS", "LATEST NEWS", "UPCOMING EVENTS", and "RECENT ACTIVITY" sections. The browser's address bar shows the URL: <http://10.10.10.240/course/view.php?id=177&sesskey=eM9iVfEcFg1&show=1>.

This screenshot shows the same Moodle course page as above, but the "Introduction to moodle" topic is now hidden. An orange callout box with the text "hidden topic" and a pointer indicates its absence from the visible list. The rest of the page layout, including the sidebar and right-hand sections, remains the same. The browser's address bar shows the same URL as in the first screenshot.