

The background of the slide is a light gray gradient with several realistic water droplets of various sizes scattered across it. The droplets have highlights and shadows, giving them a three-dimensional appearance. The text is centered on the slide.

# SPACE MAINTAINER

DONE BY:

ASSISST.LECT.ASMAA M.KHAMMAS

# Space maintainer

- Is a device used to maintain the space created by the loss of a deciduous tooth.



## **Indications of space maintainer**

If the space after premature loss of deciduous teeth shows signs of closing.

When the space for a permanent tooth should be maintained for two years or longer.

To avoid supraeruption of a tooth from the opposing arch.

To maintain the mastication of the child

# Contraindication of space maintainer

When the space left by prematurely lost primary tooth is greater than the space needed for the permanent successor as indicated radiographically.

If the space shows no signs of closing.

When succedaneous tooth is absent.

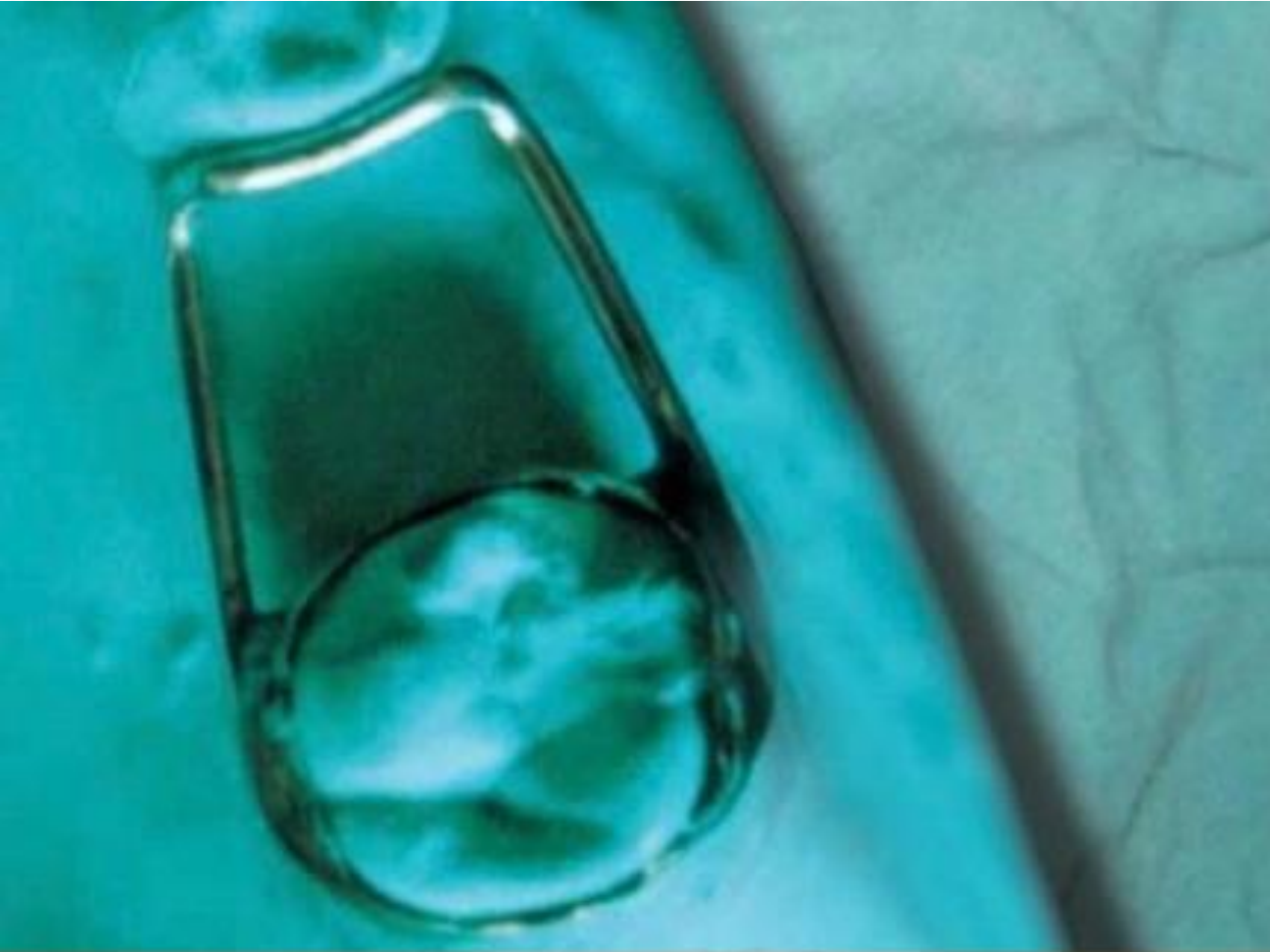
# Types of space maintainer



# Types of space maintainer

Removable space maintainer:

Acrylic partial dentures.



- It is frequently used to maintain space for unilateral loss of the primary first molar before or after eruption of the permanent first molar.

Band and loop

A close-up photograph of a dental crown and loop appliance. The crown is a dark, metallic-looking structure with a decorative, leaf-like pattern on its top surface. It is attached to a tooth via a metal band. A thin, curved metal wire (the loop) is attached to the band and extends downwards, likely to support a space maintainer or another dental appliance. The background is a soft, out-of-focus brown color.

# Crown and Loop Appliance

- It is similar to the band and loop space maintainer in all respects except that stainless steel crown is used for the abutment tooth that need to prepare the tooth

## **Indication**

- If the primary molar has extensive caries.
- If the tooth has had vital pulp therapy.



## Distal shoe

- Is the appliance of choice in premature loss of a second primary molar in both the maxilla and mandible with an unerupted first permanent molar.

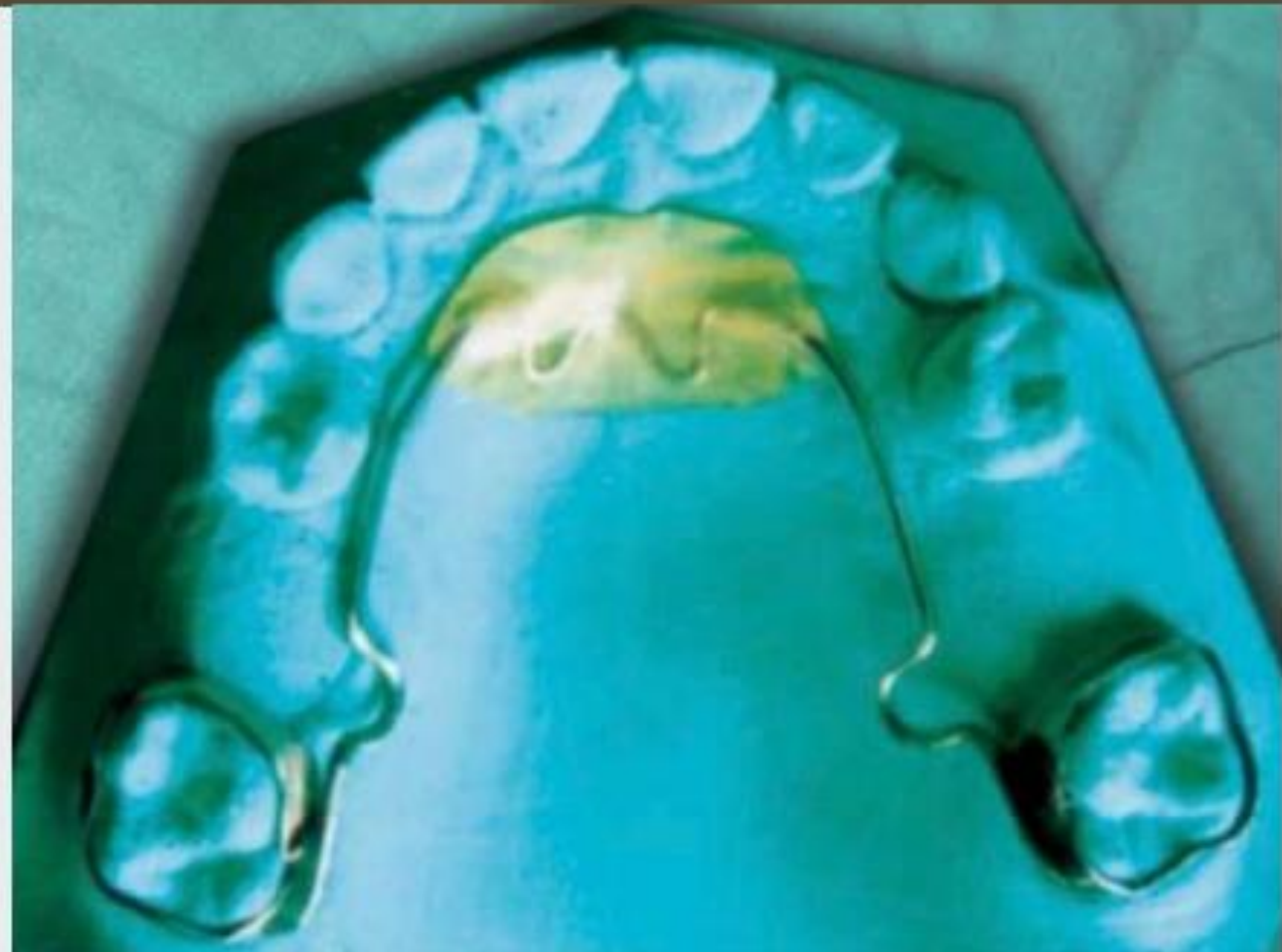


# Lingual arch

- The lower lingual holding arch is commonly used in the mandibular arch during the mixed dentition period.

# Nance palatal arch

- Nance appliance is used for unilateral or bilateral loss of maxillary second primary molars. The first permanent molars are banded, and a transpalatal wire, embedded in an acrylic button to provide resistance to mesial movement, contacts the palatal rugae.



# Transpalatal arch

A fixed palatal arch appliance used to maintain space following bilateral loss of maxillary teeth .

## Indications :

Derotate unilaterally or bilaterally rotated molars.

Control their vertical position (tongue pressure on the appliance's loop).

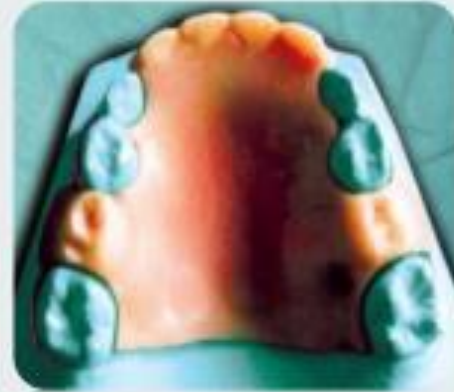
Correct unilateral cross-bites for maxillary expansion.

# Removable appliance

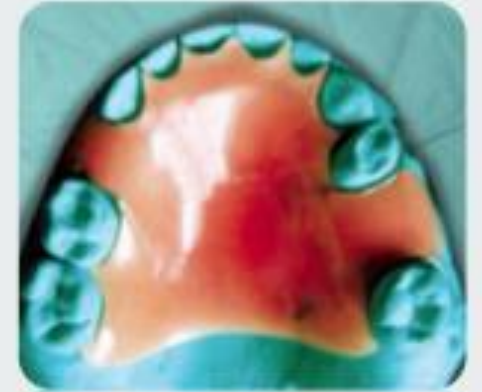
The appliance is typically used when more than one tooth has been lost in a quadrant.

Removable maintainers can be classified as

Functional  
space  
maintainers



Nonfunctional  
space  
maintainers



# Space closure

If the space was left without using any space maintainer after premature loss of primary molars, then this space will be lost.

So, we need to regain space by using space regainer

## **Type of appliances used to regain space**

### **Fixed space regainers**

1. Pendulum appliance.
2. Herbst space regainer.
3. Lip bumper.
4. Hotz lingual arch.
5. Sectional arch technique.
6. Anterior space regainer.
7. Gerber space regainer.



**Gerber space  
regainer**



# Removable space regainers

1

Jack screw  
space regainer.

2

Split saddle  
/split block  
space regainer.

3

Sling shot  
space regainer.

4

Free end loop  
space regainer.



**Jackscrew space  
regainer**

THANK YOU

