

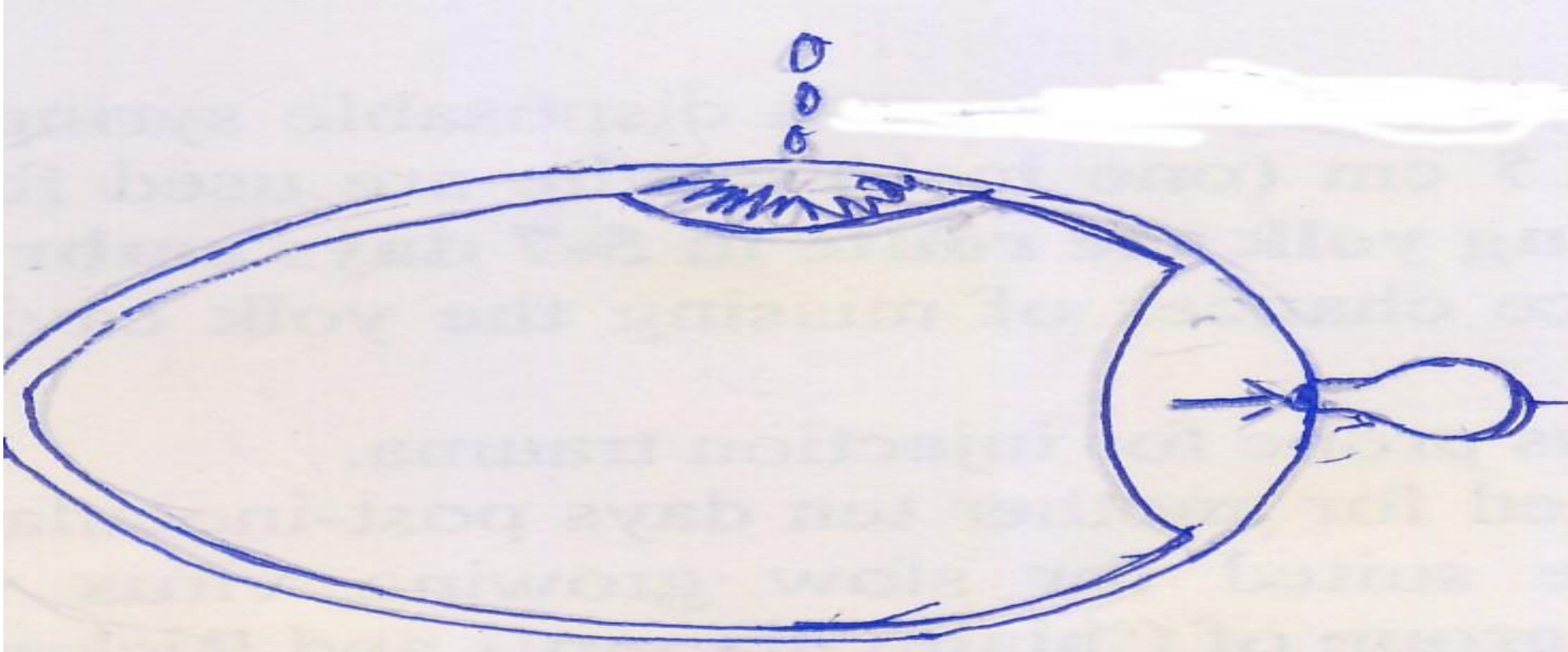
# Cultivation of

# Avian Poxvirus

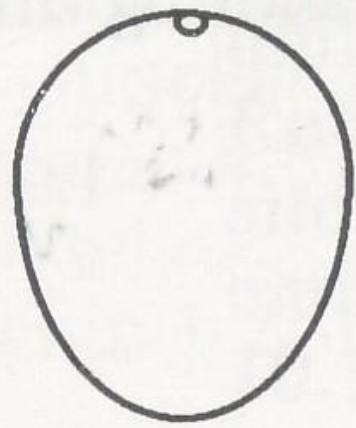


**Dr. Rawaa  
Saladdin Jumaa**

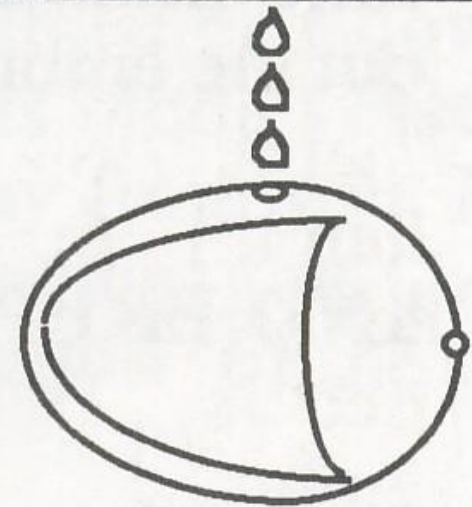
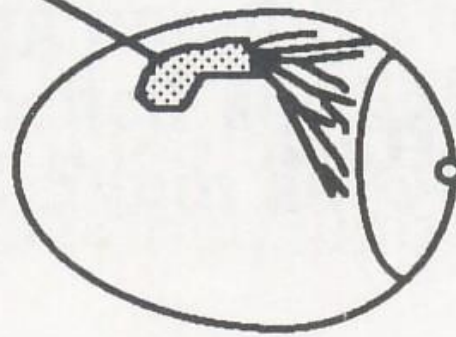
Use 1 ml syringe and deposit 0.2 ml inoculum through the shell membrane over artificial air cells on CAM.



Close the triangular opening in the shell with a suitable sized adhesive tape. Also seal the hole over air sac space with melted paraffin or adhesive tape.



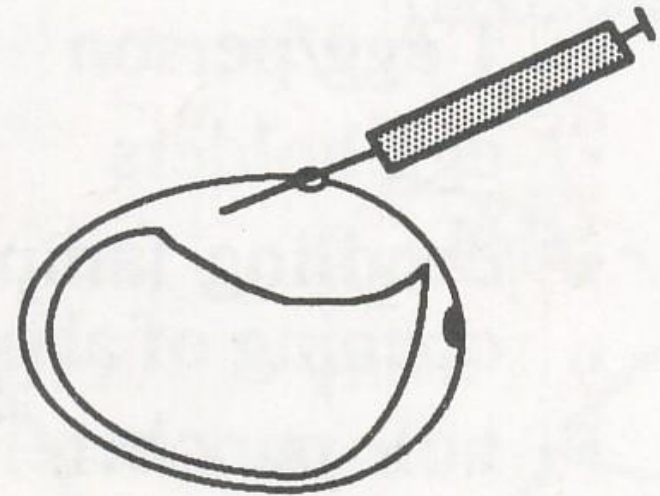
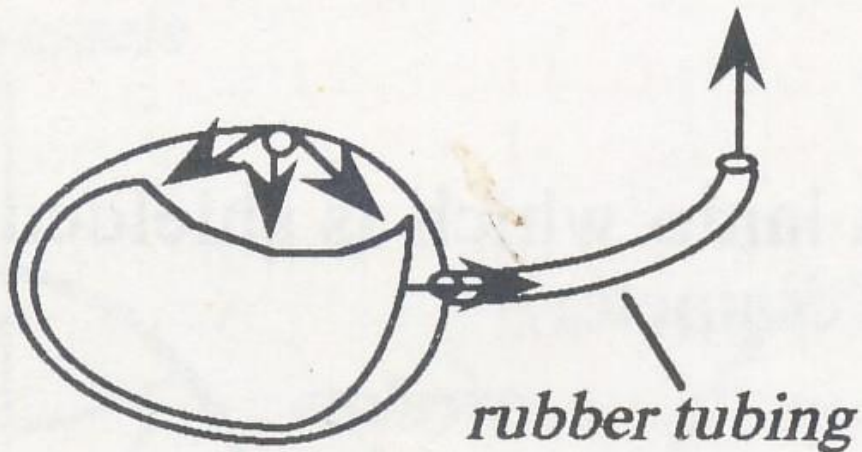
*embryo*



(a)

(b)

(c)



Chorioallantoic membrane (CAM) inoculation

After virus **inoculation**, the embryonated eggs are **incubated (Horizontal)** and **examined** daily by candling method.



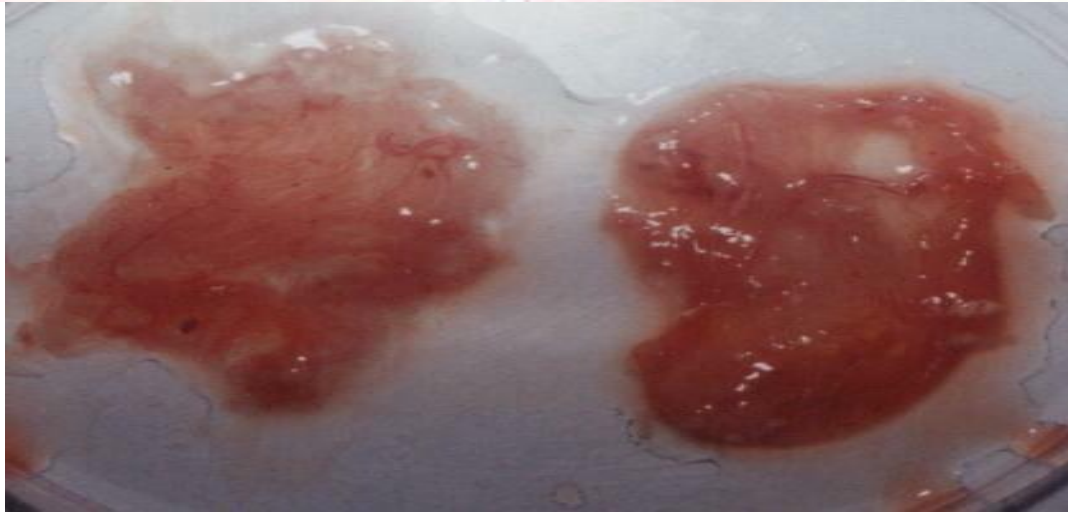
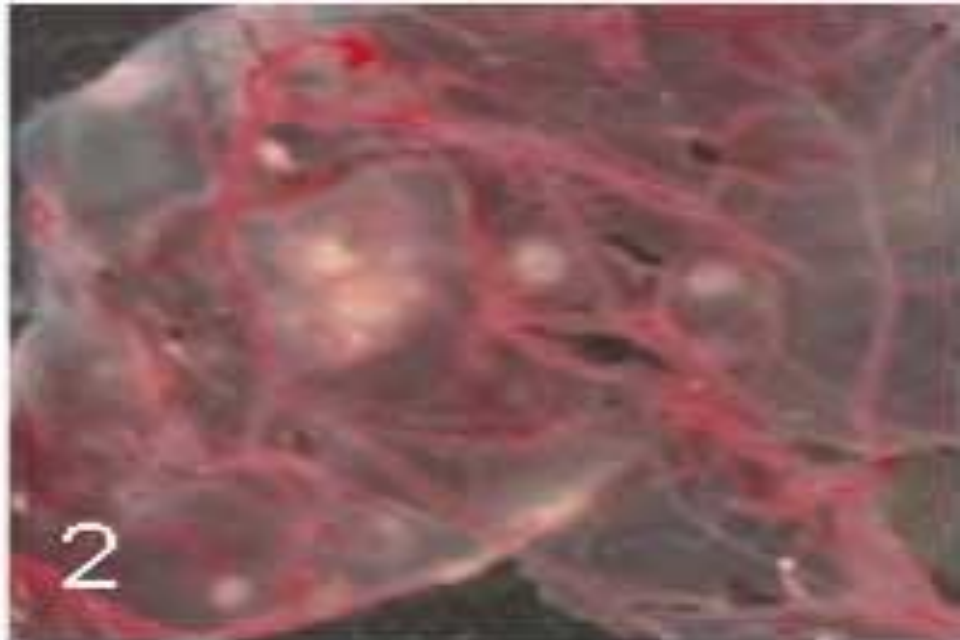
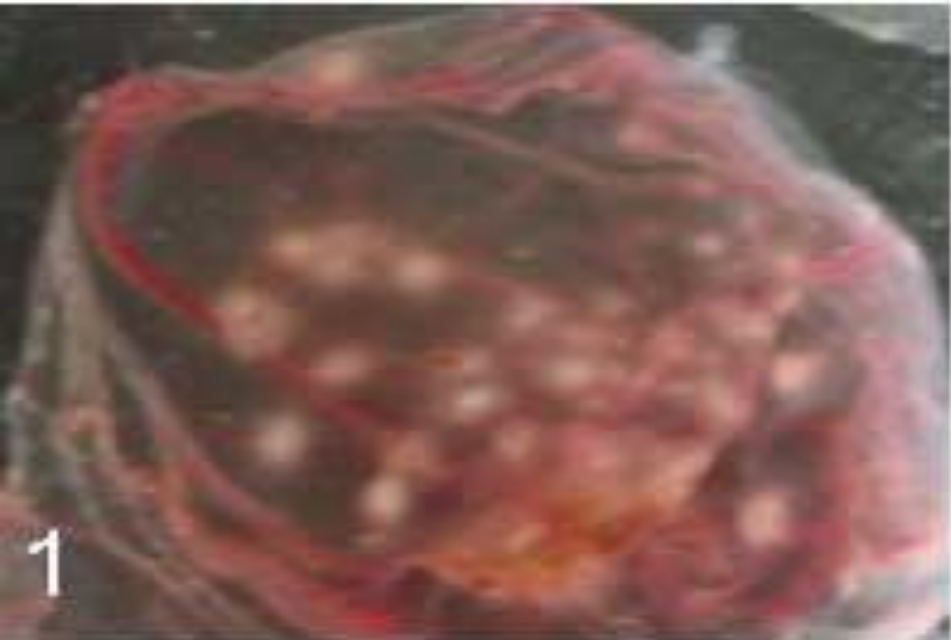
After incubation (2-3) or (5-6) days  
Harvesting

# Harvest of Chorioallantoic membrane



# Pathological changes on embryonated eggs

# Pock lesions on CAM & thickening of CAM



Thank  
you!



#ITSALLABOUTTHECHICKEN

#ITSALLABOUTTHECHICKEN