

Welcome in GAMA clinics



GAMA Clinics

Cone Beam Computed Tomography

CBCT

Dr .ali abdulrazzaq mohammed

BDS, MSc, PhD in Prosthodontics



Ali abdul alrazaq mohammed



What is the CBCT



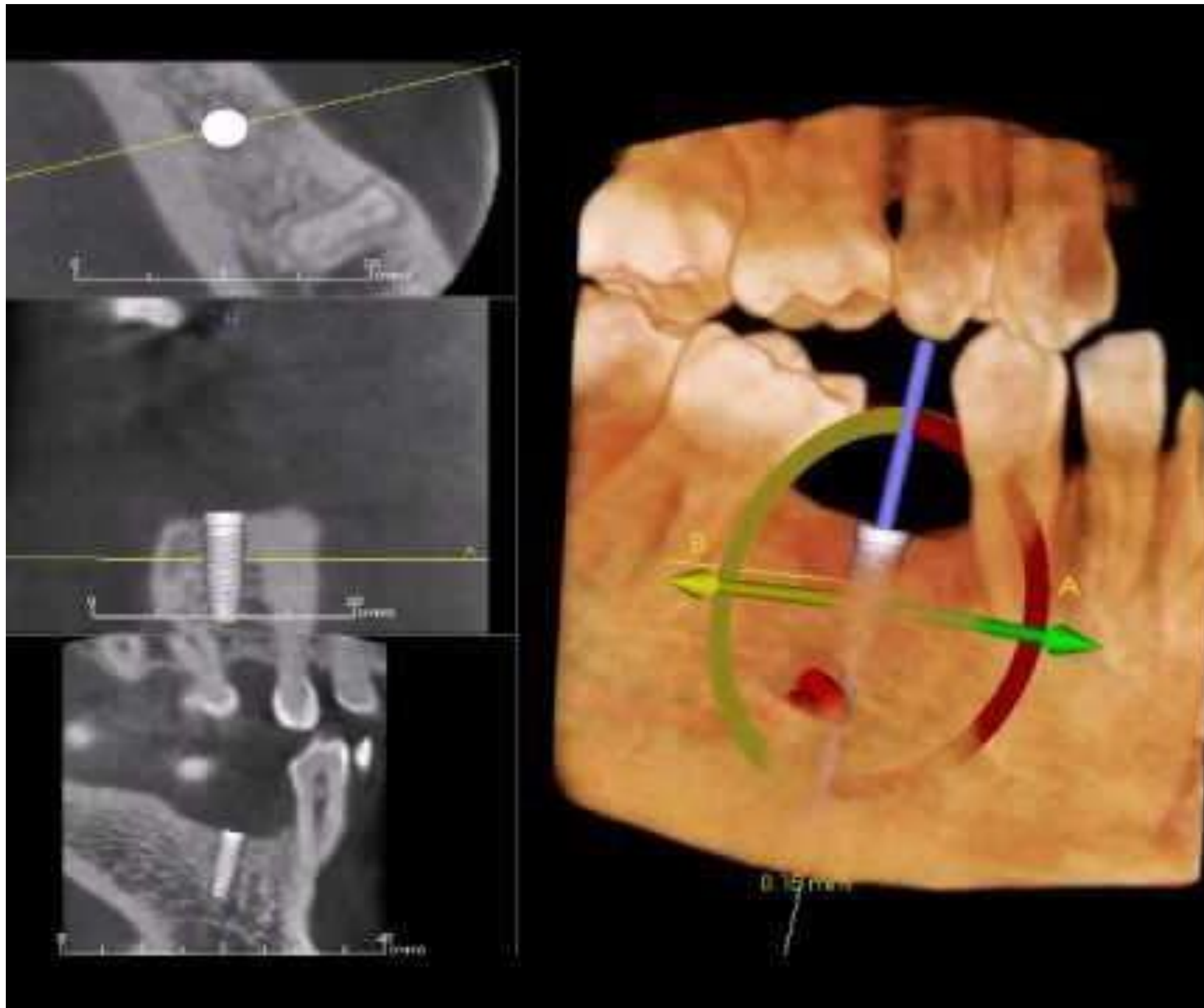
It is a technology used to take three dimensional (3-D) images of your teeth, maxillary sinus, nerve pathways, and bone in the maxillofacial region with a single scan.

What is the CBCT



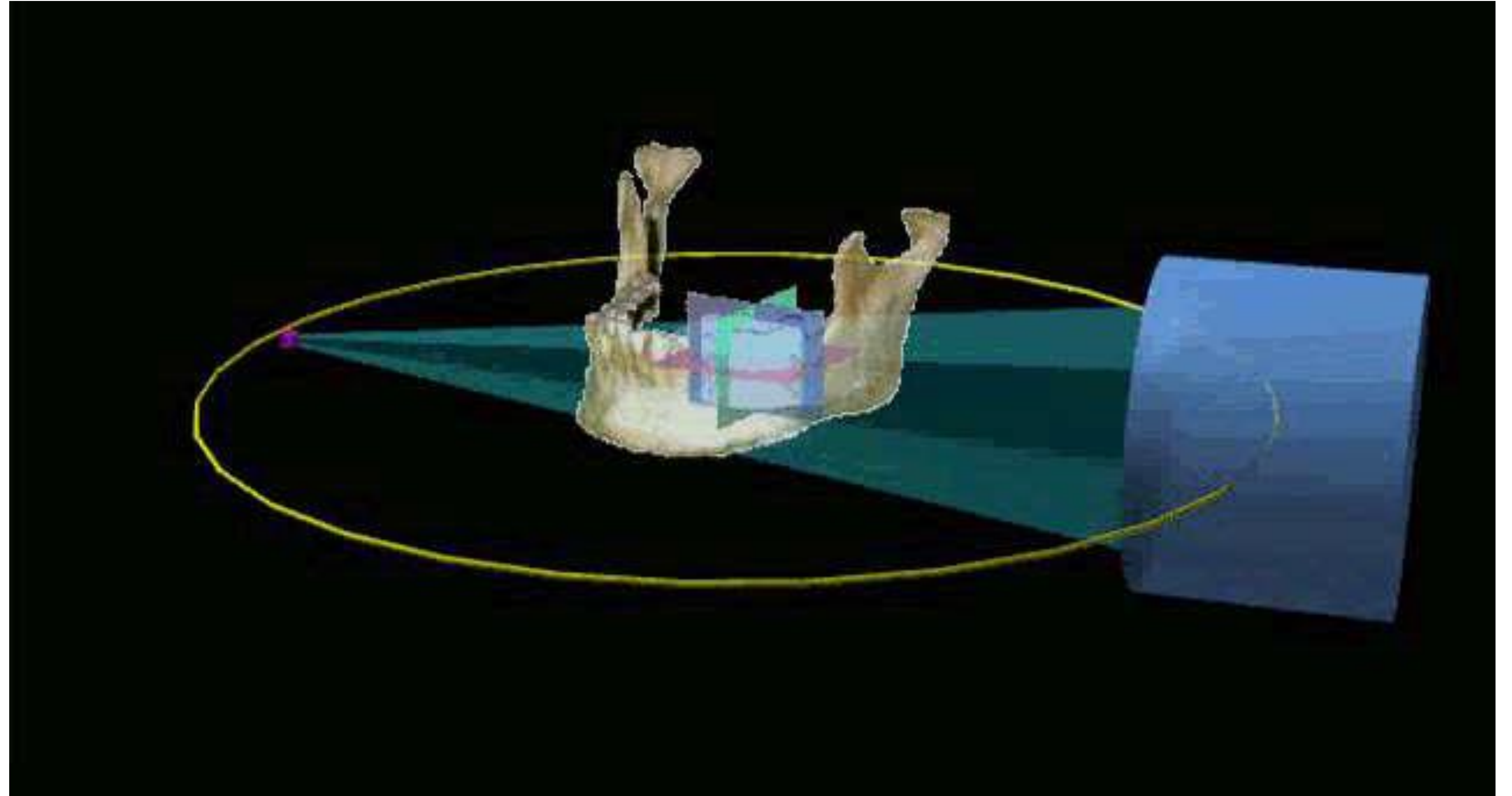
The CBCT system rotates around the patient in approximately 30 seconds, capturing data using a cone-shaped x-ray beam.

Why CBCT

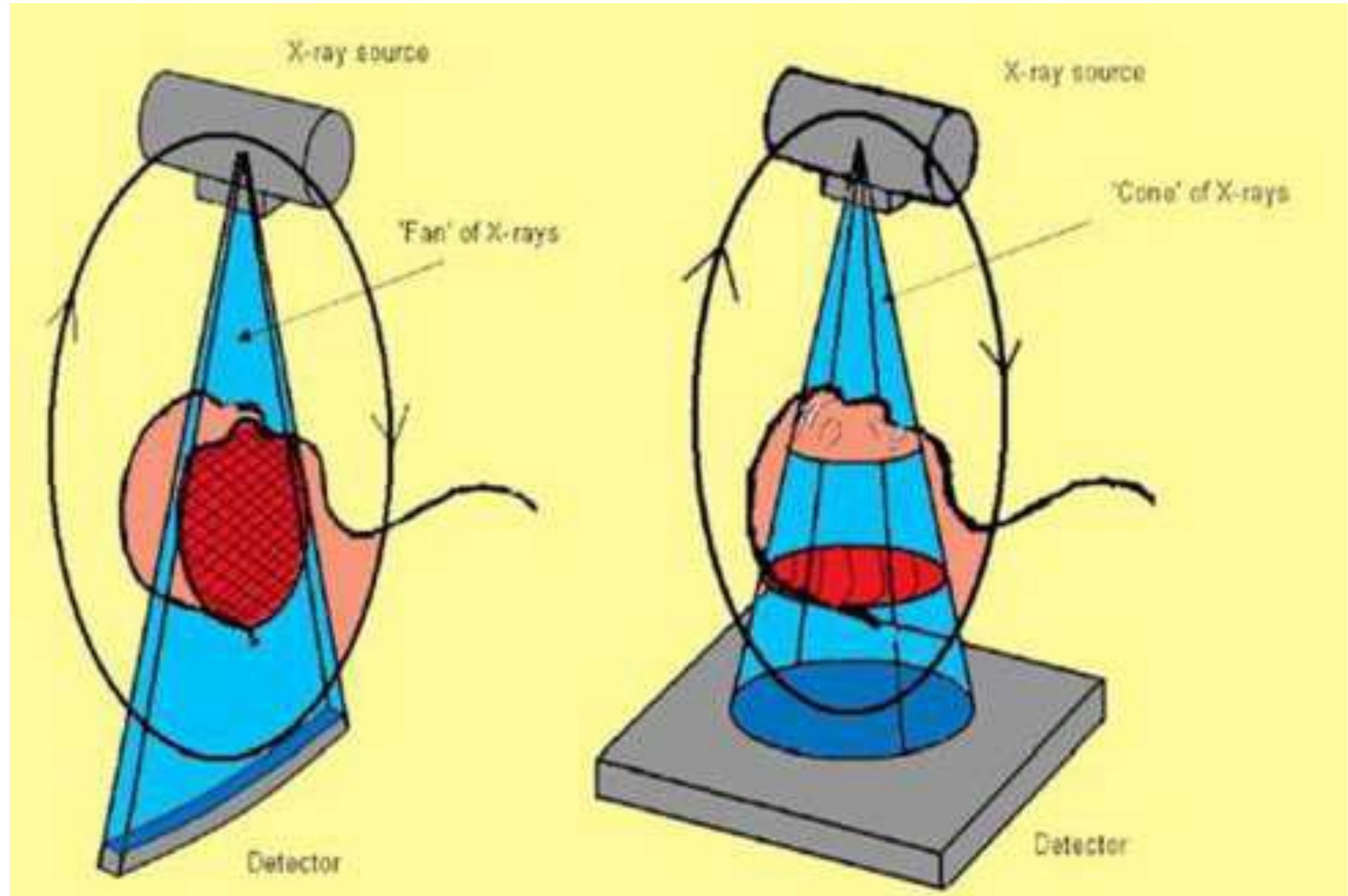


With CBCT, clinicians can get highly detailed 3-D views of the facial region with lower radiation exposure than a conventional CT scan.

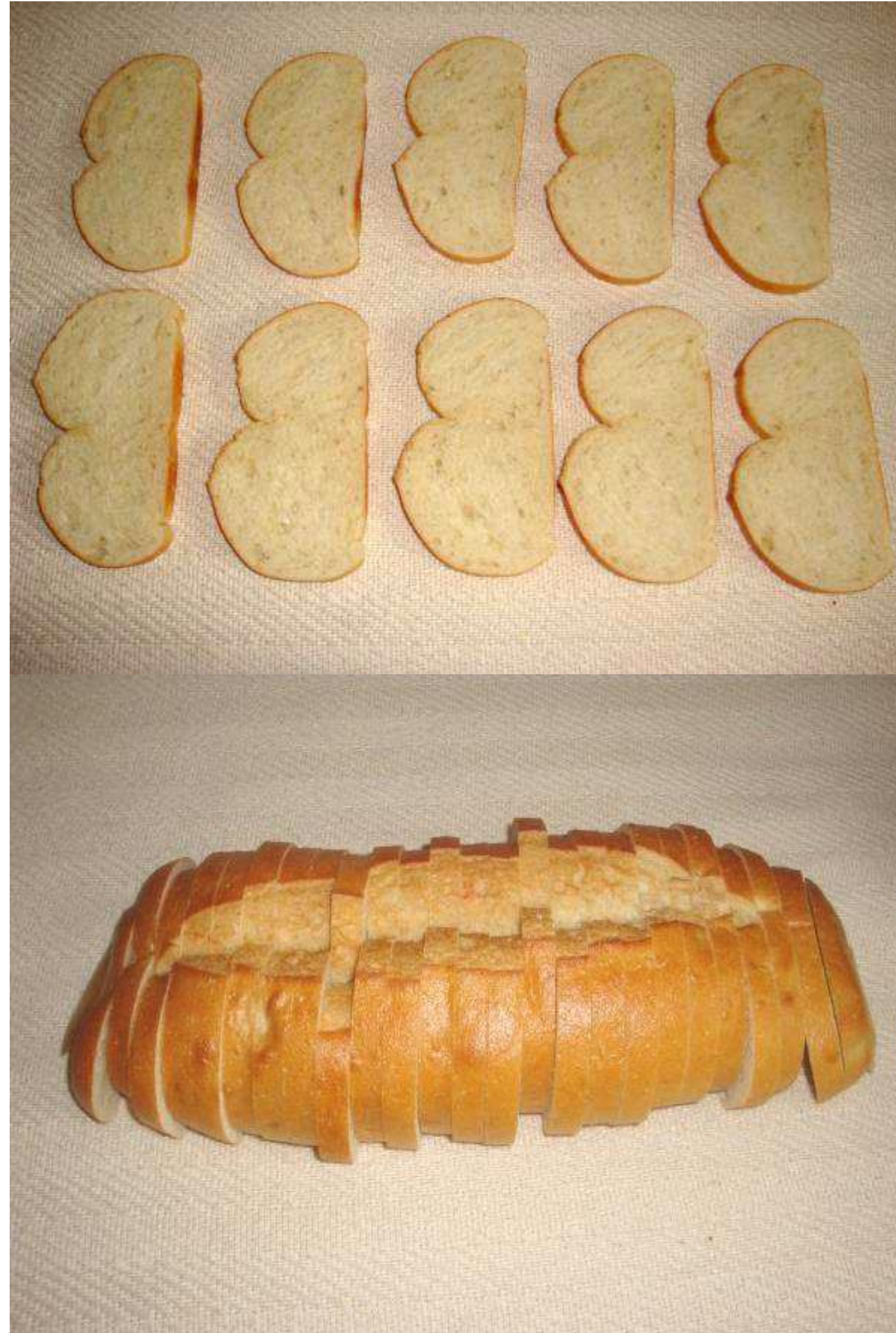
CBCT Volume Capture



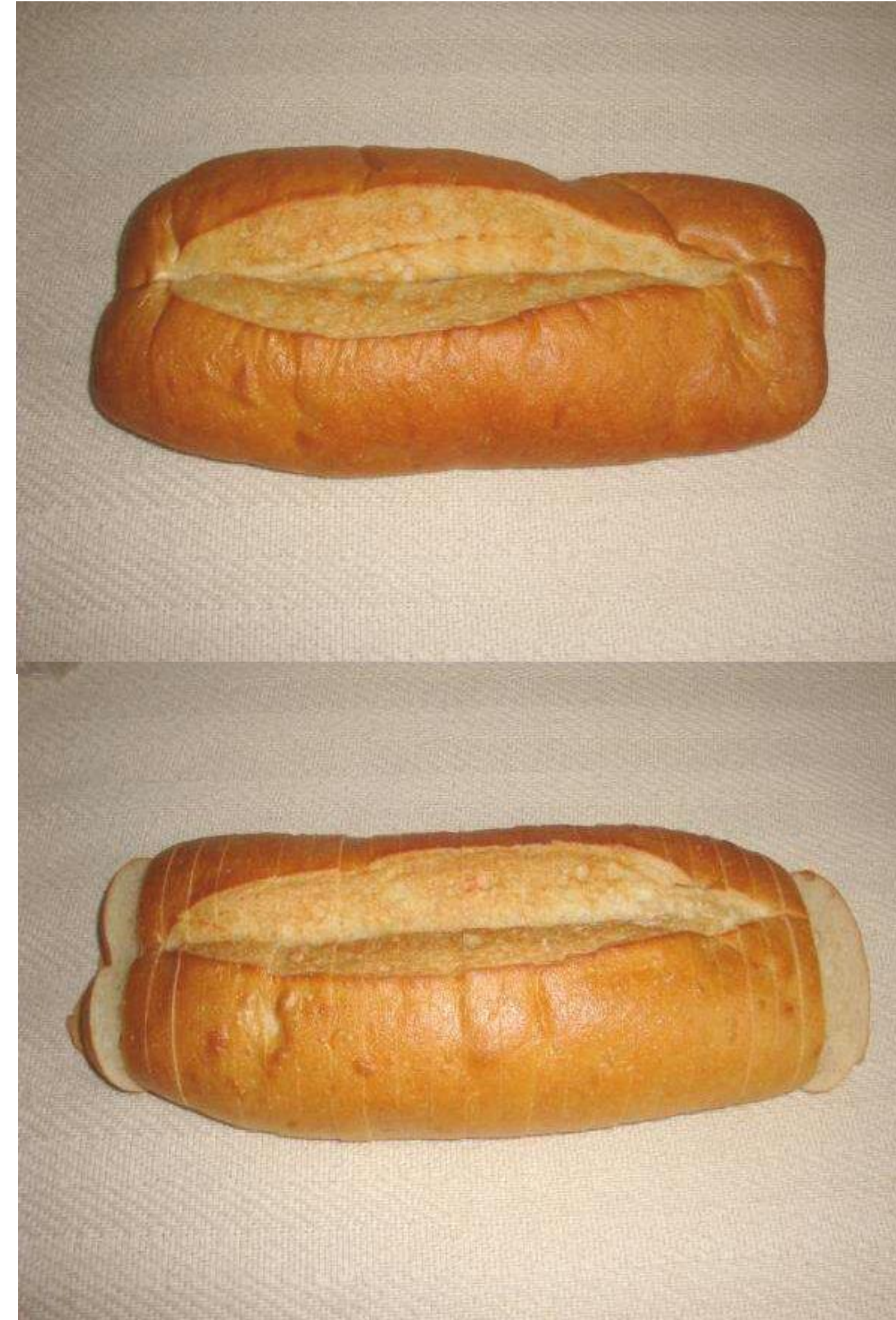
Medical CT vs . Dental CBCT



Medical CT vs. Dental CBCT



Slices are acquired then reconstructed to create the volume



The volume is acquired then slices are reconstructed from the volume

Advantages



Rapid scan time

Beam limitation

Image accuracy

Reduction in patient radiation dose when compared to medical ct (10 times less (

Economical comfortable and safe

Disadvantages



Scatter

Motion artifacts due to increased scan time

Poor contrast resolution, thus soft tissue cannot be reviewed

Use in dentistry

Implantology and prosthodontics

Oral and maxillofacial surgery

Endodontics

Periodontics

Orthodontics

Radiographic Doses

**Typical doses of various
dental radiological
procedures**

Intra-oral 0.001 mSv up to 0.004 mSv

Full-mouth set 0.080 mSv

Lateral cephalogram 0.002 mSv

Dental panoramic technique 0.015 mSv

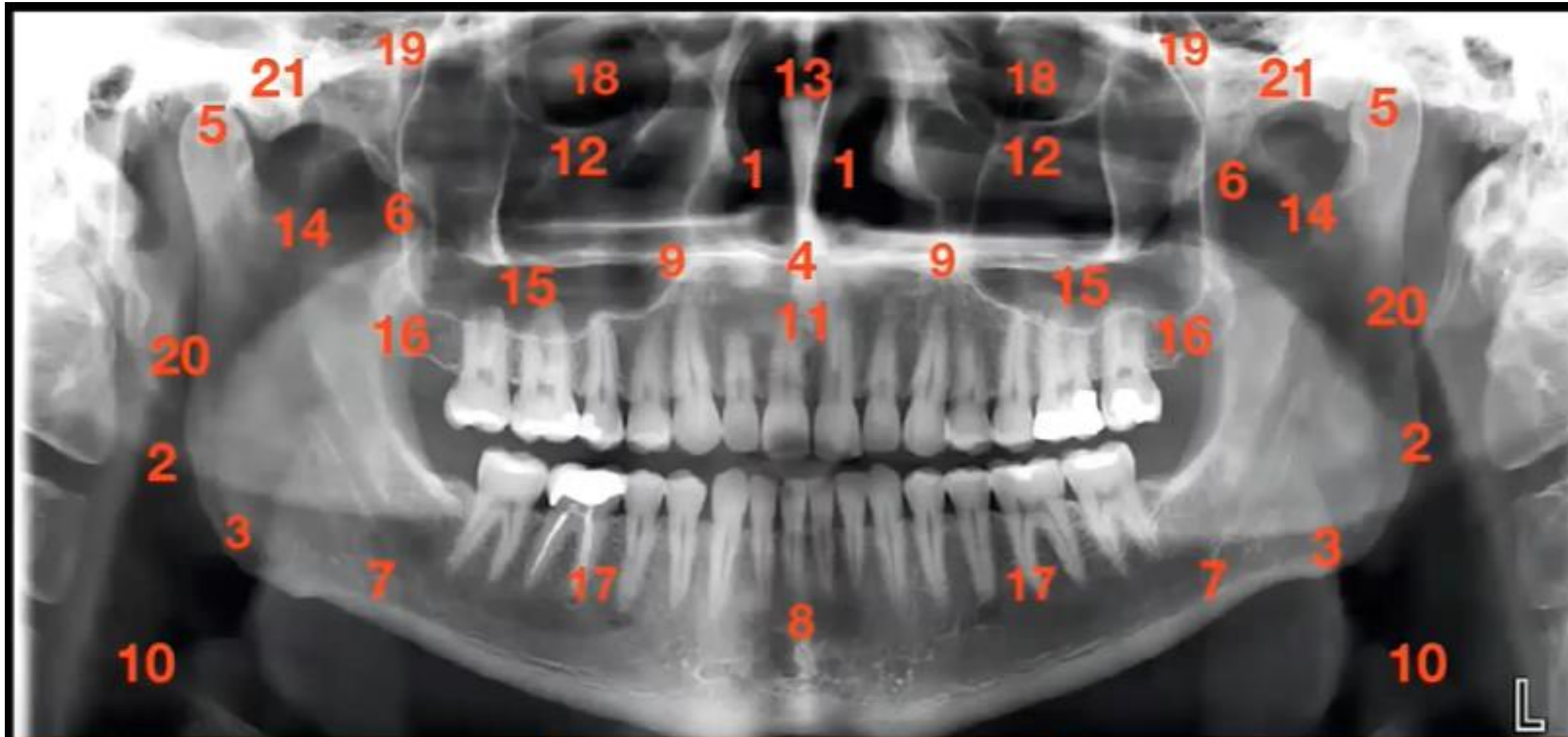
CBCT (both jaws) 0.068 mSv

Hospital CT scan (both jaws) 0.6 mSv

Thank You



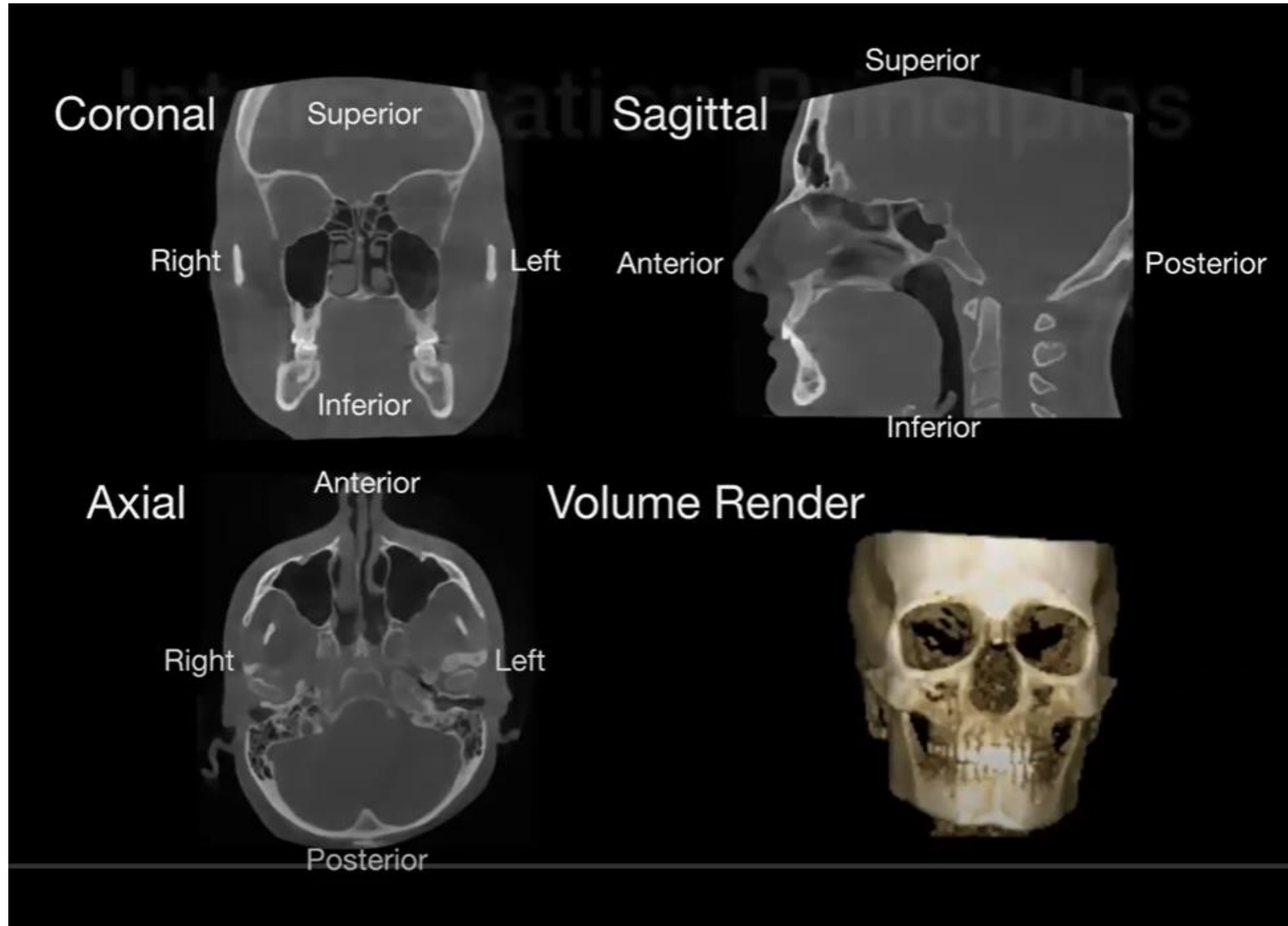
CBCT vs OPG



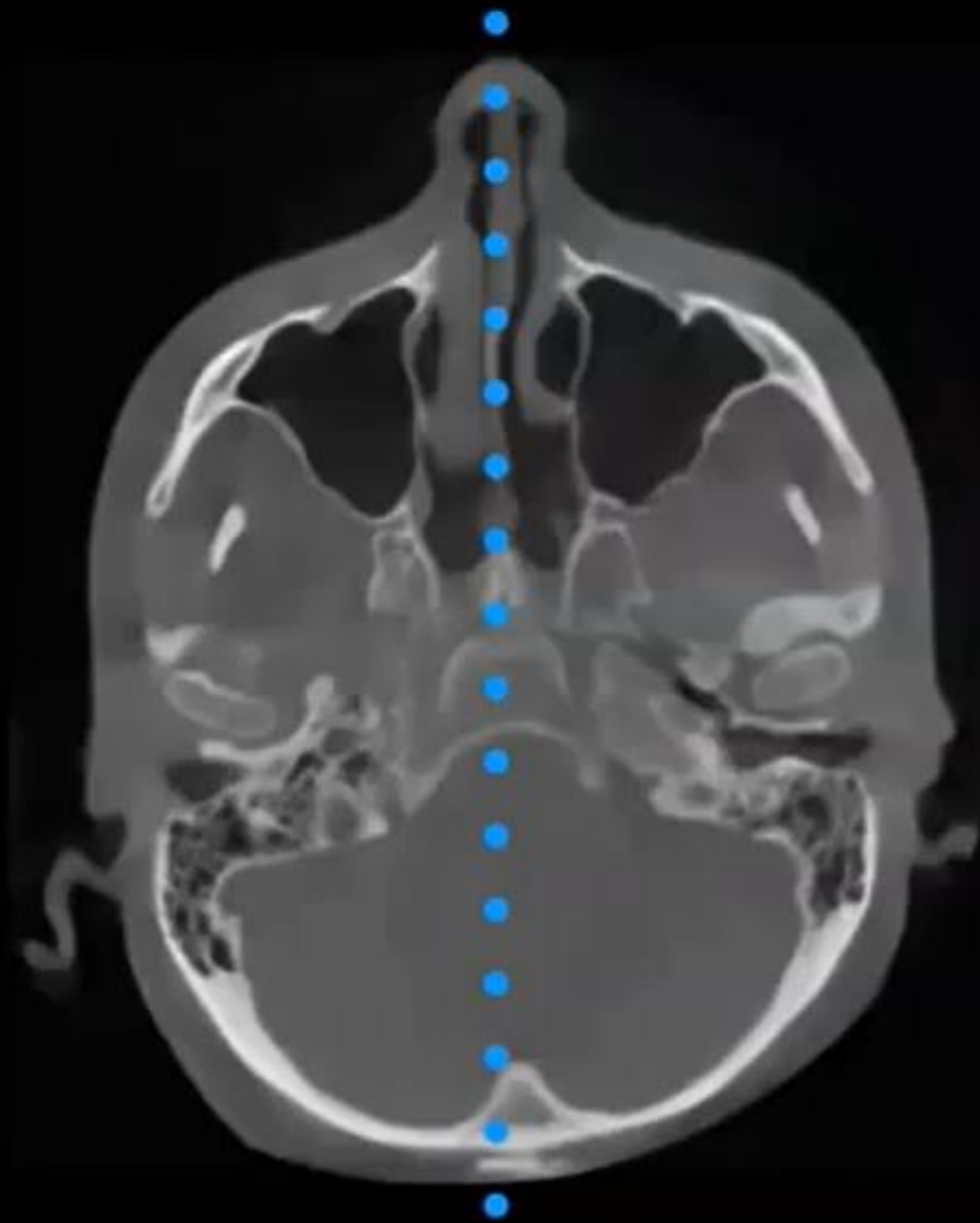
1. Nasal cavity	8. Genial tubercles	15. Maxillary sinus
2. Air space/oropharynx	9. Hard palate	16. Maxillary tuberosity
3. Angle of mandible	10. Hyoid bone	17. Mental foramen
4. Anterior nasal spine	11. Incisive foramen	18. Orbit
5. Condylar head	12. Infraorbital rim	19. Pterygomaxillary fissure
6. Coronoid process	13. Nasal Septum	20. Styloid process
7. Mandibular canal	14. Mandibular notch	21. Zygomatic arch



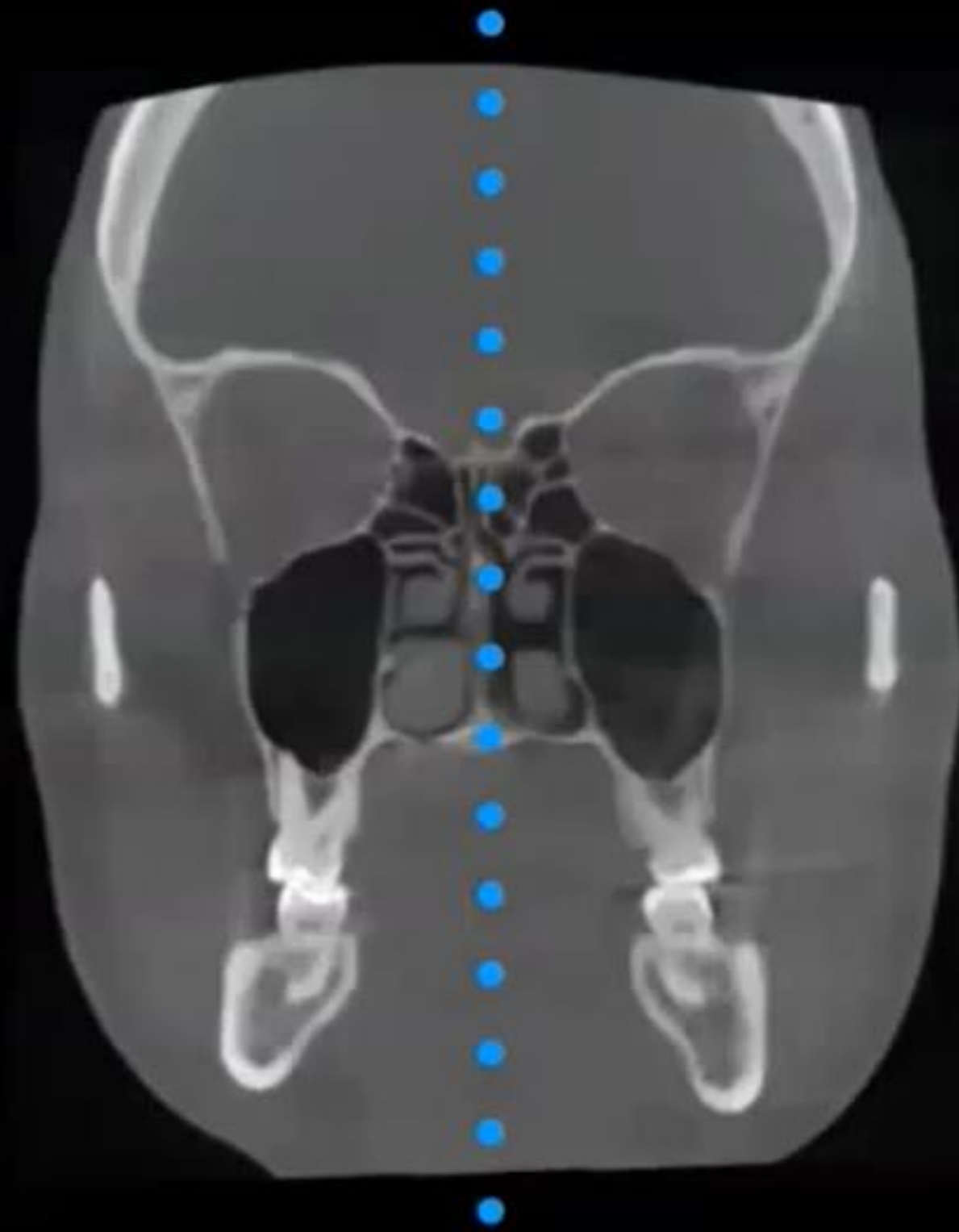
CBCT views



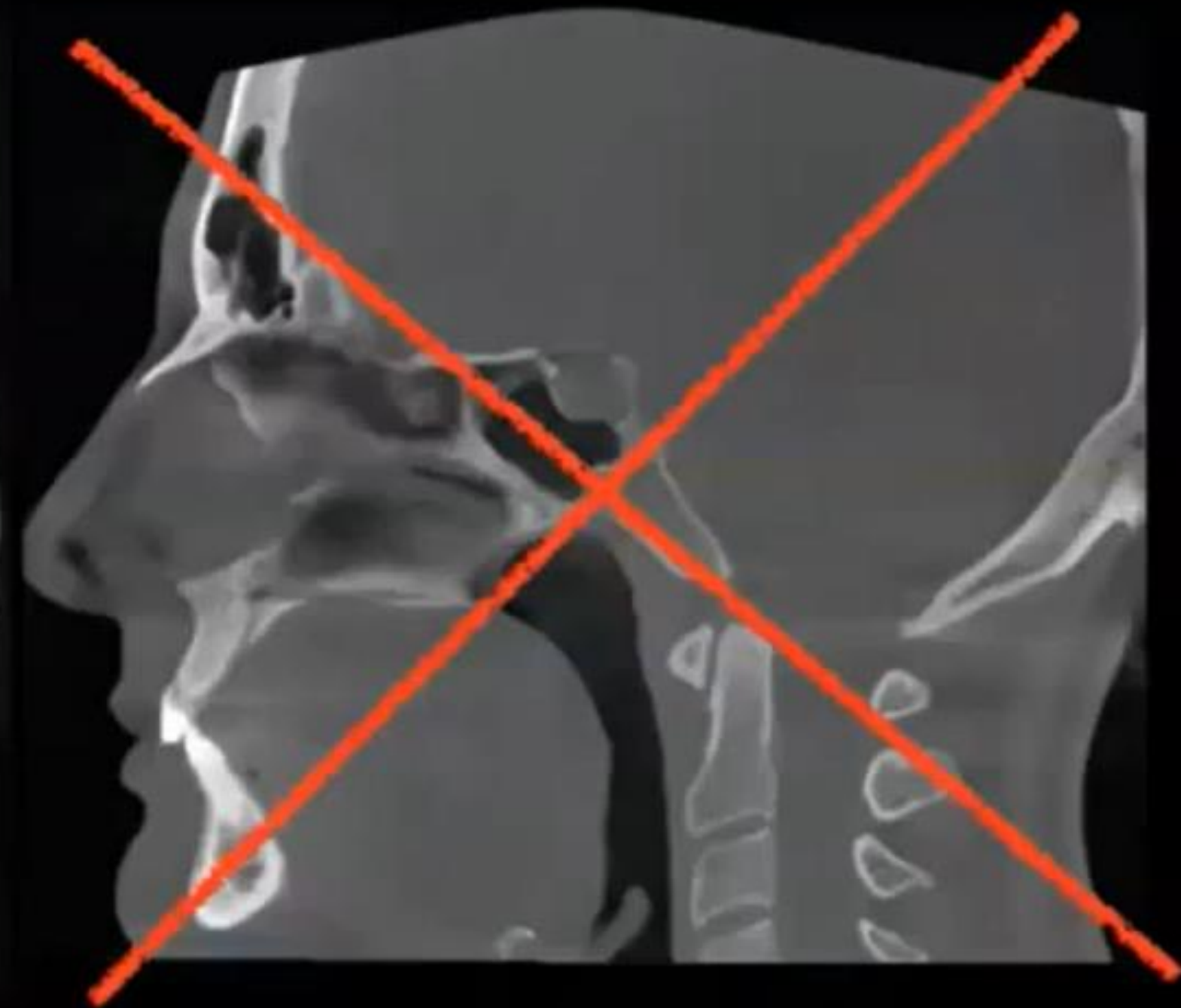
Symmetry



Axial

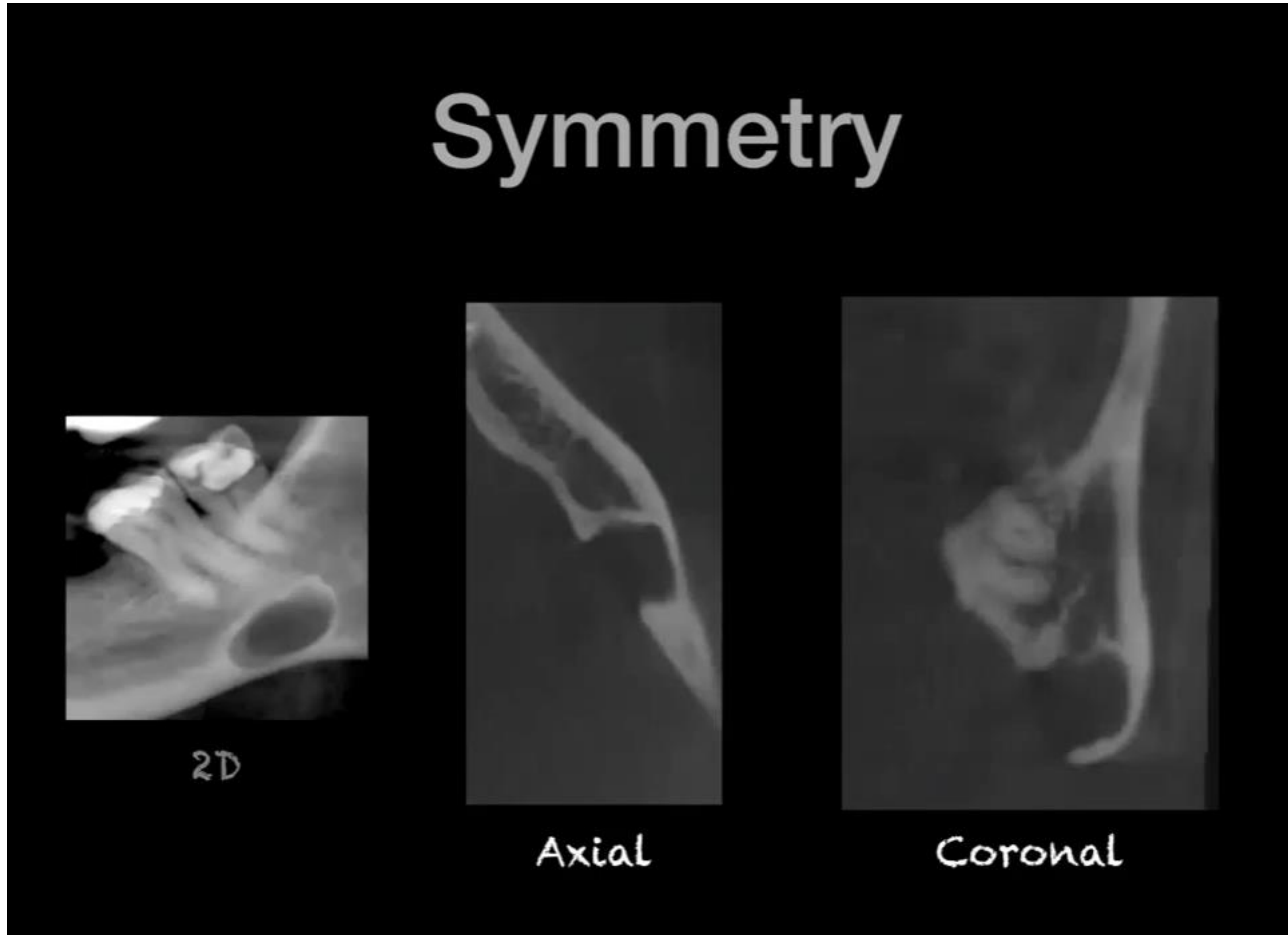


Coronal



Sagittal

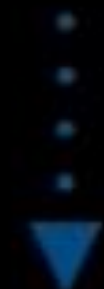
Symmetry



System

Systematic Approach

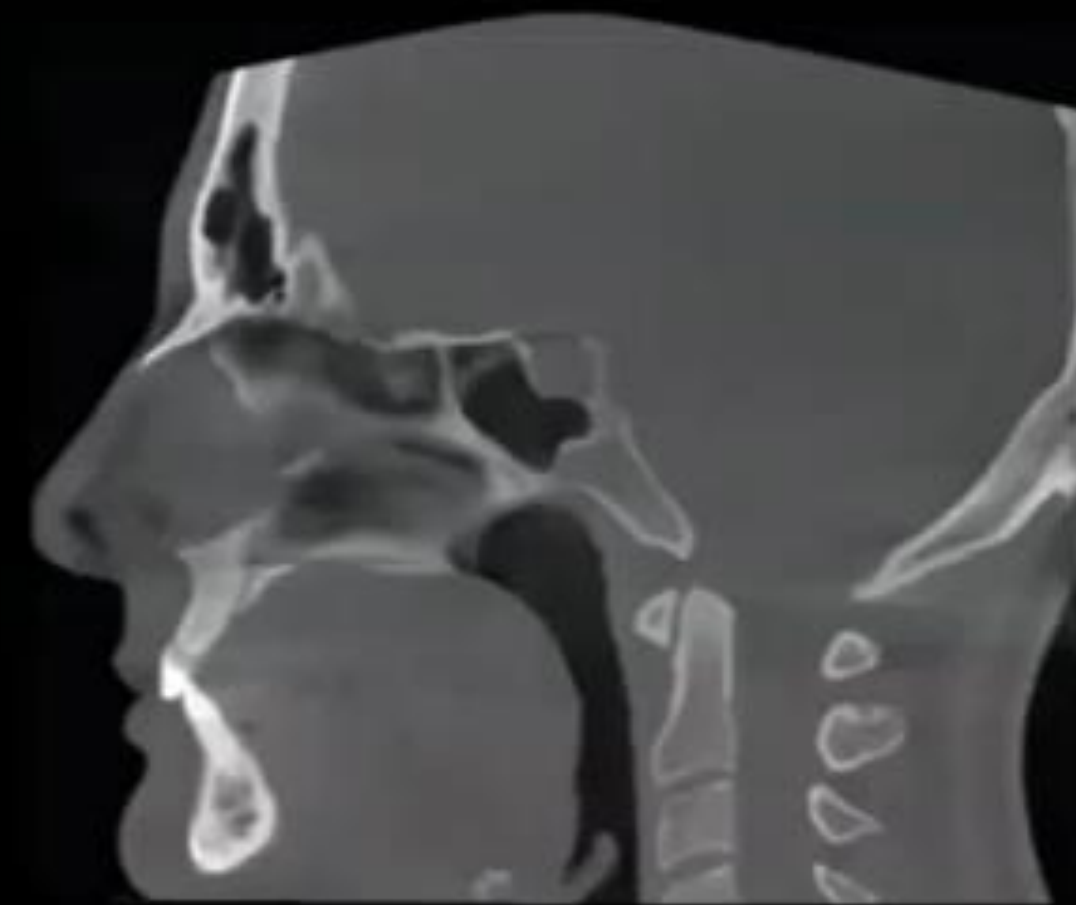
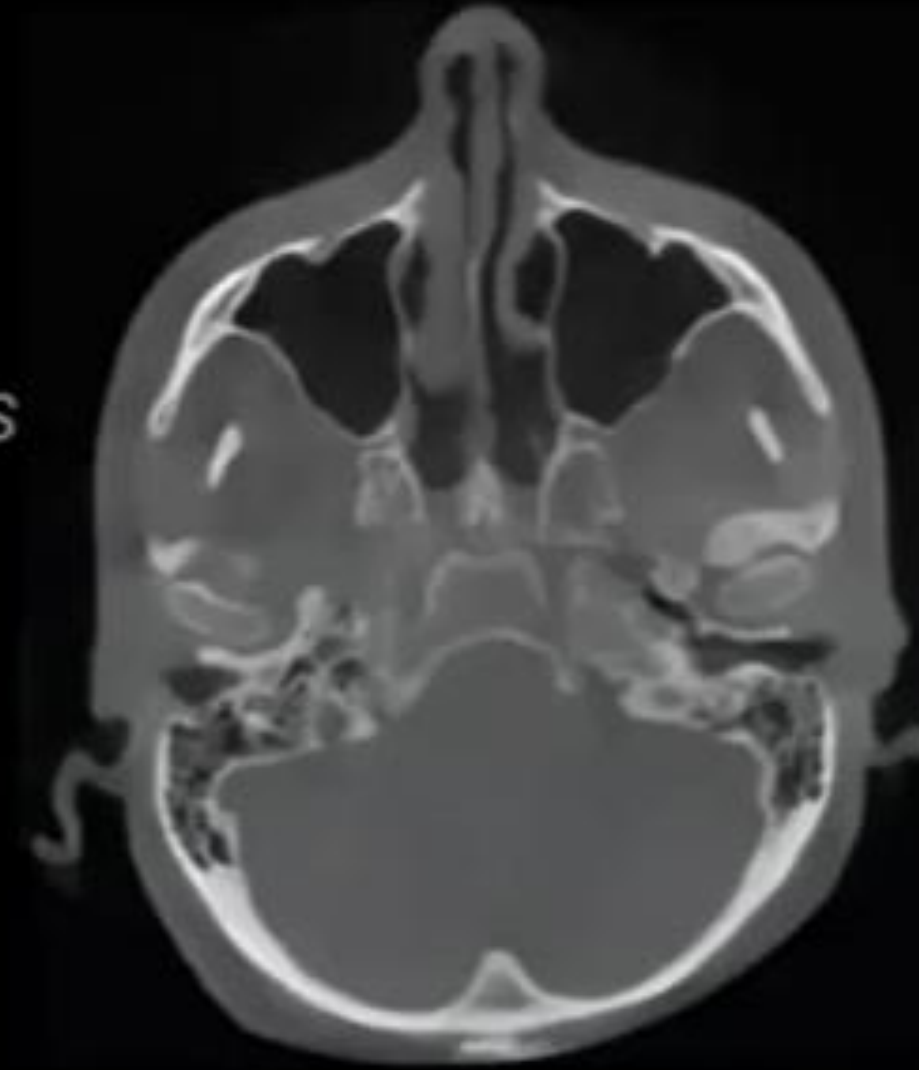
Review patient information
Age, gender, med hx, clinical findings



Review CBCT
Global to Local



Search pattern
Axial, coronal, sagittal



Where to Start?

